

## Randall County 4-H Newsletter

### Extension Office Staff

Leesa Wood Calvi  
CEA—FCS

J.D. Ragland  
CEA—Ag

Vera Shorter  
Office Manager

Sue Walker  
Secretary



### District Fashion Show District Story Board

When: April 30th

Where: Boys Ranch

Paperwork Due to Extension by April 8th  
Enter on 4-H Connect by April 10th

### 4-H Consumer Decision Making Project

When: Thursdays

Where: Kuhlman Extension Center

4-H Connect Entry Deadline: Monday, April 18th

District competition is Sat., April 30<sup>th</sup> at Boys Ranch. Please let Trisha know that you're interested by e-mailing her at: [triciaodom@sbcglobal.net](mailto:triciaodom@sbcglobal.net) or call 806-335-5064. Consumer Decision Making is like livestock and horse judging complete with reasons, but using consumer goods as the subjects. Subjects range from clothing, debit cards, used cars, and other items that teenagers will need to be able to purchase for themselves when they graduate and leave home.



### Arts & Crafts Contest

When: April 30th

Where: Boys Ranch

You are responsible for getting your entry to and from the contest. For more information, go to <http://d14-h.tamu.edu/events/clothing-textiles-project/>. The rules are at page 16 of the Jr/Int Clothing & Textile Packet. **If you wish to enter anything, please complete the Arts and Crafts Entry Form also at this web site and return to the Extension Office by April 18th.** You may fax it to 468-5547 or e-mail to [randall-tx@tamu.edu](mailto:randall-tx@tamu.edu).



Extension programs serve people of all ages regardless of socioeconomic level, race, color, religion, disability or national origin.

The Texas A&M System,  
U.S. Department of  
Agriculture, and County  
Commissioners Courts of  
Texas Cooperating.

### County Council

When: 6:30 p.m. Tuesday, April 19th (Officer Elections)  
6:30 p.m. Tuesday, April 26th (Council By-laws)

Where: Kuhlman Extension Center



### Adult Leaders

When: 6:30 p.m. Tuesday, April 26th

Where: Kuhlman Extension Center

**REMEMBER COUNCIL—YOU HAVE ASSIGNMENTS HERE!**



## 4-H Stars!

### County Fashion Show

#### Clover Kids

Kyla Cobb	Construction	Casual
Karlie Venhaus	Construction	Casual
Abby Burkham	Construction	Dressy

**1st place winners who qualify to compete at district on April 30th are:**

#### Juniors

Tavianna Williams	Buying	Casual
Katelyn Beownd	Construction	Specialty
Haley Roberts	Construction	Casual
Emily Boschen	Construction	Dressy
(Sarah Winters-Construction)	Casual-Alternate to District)	

#### Intermediates

Blakelee Brownd	Embellished
-----------------	-------------

#### Seniors

Rachel Smith	Buying	Casual
Sheridan Artho	Buying	Dressy
Rachel Smith	Story Board	

### Star of Texas

#### Swine

Callie Hawkins	6th
Hannah Hawkins	4th

#### Sheep

Brynn Owen	Reserve Breed Champion
------------	------------------------

**We apologize if we've failed to recognize any of your 4-H accomplishments. Contact the Extension Office, and we'll be glad to mention them in next month's newsletter.**

### Fort Worth Stock Show

(Here's a correction on results listed in last month's newsletter)

Horse Judging Team - 3rd:

Emily Carpenter  
Sparklynn Rust  
Logan Pluhar  
**Hunter Smith**

### Houston Stock Show

#### Swine

Lauren Rogers Biggs	9th
Brenan Faske	9th
Lainye Meador	8th
Claire McCormick	10th
Ryan Smith	4th

#### Sheep

Brynn Owen	5th
Quay Owen	16th

#### Steers

Tyler Nelson	4th
Madison Parker	7th

### Summer Clothing & Food Projects

#### Planning Meeting

**When: 7 p.m. Monday, April 18th**

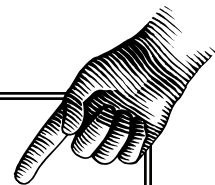
**Where: Kuhlman Extension Center**



### Attention Club and Project Leaders

There is a clip board in each Extension meeting room with blank Club/Project Meetings Report Forms attached. Please fill one out during your meeting and leave it on the back of the clip board.

If you have information for the 4-H newsletter, e-mail it to [randall-tx@tamu.edu](mailto:randall-tx@tamu.edu) by the 20th of each month. Please help make our job easier by observing this deadline.



### North Region Junior Leader Lab

**When: May 31-June 2**

**Where: South Plains College-Levelland**

This lab is for 4-H members ages 9-13 and costs \$147 per person. For more information go to <http://lubbock.tamu.edu/>. Registration must be done via 4-H Connect and will close on April 15th.

## National Volunteer Week April 10-16

Don't forget to recognize and show your appreciation to our volunteers. Volunteerism Resources Web Site is

<http://od.tamu.edu/volunteerism->

## Mission Possible Camp

**When: July 6-8**

A camp for youth with or without disabilities, participants will experience traditional camp experiences but at a slower pace. Located at the 4-H Conference Center in Brownwood cost is \$150. Registration is limited to the first 25 youth. For more information go to <http://texas4hcenter.tamu.edu>.



## 4-H Center Summer Camps

**Bit, Bytes & Bots Technology Camp** June 6-10

**Texas 4-H Outdoor Challenge** July 9-10

### Prime Time

Session I July 24-July 27 (12-13 years of age)

Session II July 27-July 30 (9-11 years of age)

**SpecTra** July 18-22

Register for these camps on 4-H Connect. For more information, visit the 4-H Center website at <http://texas4h-ctr.tamu.edu>.

## Willeford Family Fundraiser

**When: 6:30-8:30 p.m. Sunday, May 15th**

**Where: Feldman's Wrong Way Diner in Canyon**

There will be a silent auction and a ribeye dinner served. Tickets are \$20 per person and can be purchased from Bob (341-4890) or Angela Burkham, Ty or Robyn Cranmer (677-2641) or Jim David Cook. All proceeds go to the Willeford family.

## County Community Service Project

Each month, Randall County Council will be collecting items which they will box at their April 19th meeting and distribute to a selected homeless shelter. Please bring any items you would like to donate to the Extension Office (hours are 8 a.m.-Noon and 1-5 p.m.)

**Help us, help others!!**

April-Small snacks



## Scholarships

### Daisy Shooting Sports Scholarship

Deadline to apply is May 15th. Contact the Extension Office for an application.

### USGIF Scholarship

This is for 4-Hers who have been working with GIS & GPS. Scholarships are due May 2nd. More information can be found at <http://usgif.org/education/scholarships>.

### Texas Fairs and Events Education Scholarship

Applications are available at the Extension Office and must be received at the Tri State Fair Office in Amarillo by April 15th.



## National 4-H Congress

**When: November 24-29**

**Where: Atlanta Georgia**

**Cost: \$1,600**

4-H Connect Registration for this closes April 15th. For more information go to [http://texas4h.tamu.edu/youth/natcongress/index\\_youth\\_natcongress.php](http://texas4h.tamu.edu/youth/natcongress/index_youth_natcongress.php)



## Entomology

**When:**  5-6:30 on April 4th & 11th, 19th and 26th; May 3rd

**Where: WT Ag Building lab room 221**

**Enter on 4-H Connect: April 28th**

The Entomology Project is now ready to get started to be Buggy! Come learn about insects with Professor Bonnie Pendleton, be involved with an Expo at WTAMU and end with **district competition on May 5th**. Lots of fun and learning. Contact Jeanice Kett at 282-4240 for more information.

## Clothing Community Service Project

New or used winter clothing is now being collected at the Extension Office for the Guyon Saunders Resource Center and the Inter Faith Hunger Project. It will be cleaned and distributed to the homeless. Contact Sarah McCarty, 354-8689, if you have any questions. What great community service activity to add to your County Fashion Show entry!

## State Roundup Meeting

**When:** 6:30 p.m., Tuesday, May 10th

**Where:** Kuhlman Extension Center

**4-H Connect Entry Deadline:** May 9th

If you've qualified for State Roundup or if there is a possibility that you may, you must attend this mandatory meeting.

## District Leaders for Life Contest

**When:** 2 p.m. Saturday, May 7th

**Where:** District Office

The Leaders for Life Program will provide resources to equip counties in high quality leadership training, parliamentary procedure training, and service learning activities. We're looking for participants and adult leaders. Forms and resources are available at <http://texas4-H.tamu.edu/projectsd/leaders4life/index.php>. Contact the Extension Office if you're interested.



## Record Books

It's never too early to get started on your 4-H record book. Check out the web site [http://texas4-h.tamu.edu/youth/recordbooks/index\\_youth\\_recordbooks.php](http://texas4-h.tamu.edu/youth/recordbooks/index_youth_recordbooks.php) for important information.



## M.A.S.H. Camp 2011

**When:** June 27-29, 2011

**Where:** Texas A&M, College Station, TX

**Who:** 7th-9th grade students (even non-4-H)

This camp is a hands-on learning experience that allows any youth in Texas to learn about the medical, safety and health career fields. Contact Courtney Dodd, 979-845-6533 or [cfodd@ag.tamu.edu](mailto:cfodd@ag.tamu.edu), for more information.

## WHEP Contest

The Texas 4-H Wildlife Habitat Evaluation Program (WHEP) State Contest will take place May 14-15 in the Eisenhower State Park on Lake Texoma in northern Grayson County. For more information find the Texas 4-H website ([texas4-H.tamu.edu](http://texas4-H.tamu.edu)) and search for "WHEP". You may direct questions to Larry Hysmith at [lhysmith@tamu.edu](mailto:lhysmith@tamu.edu).

## Opportunities for 2011 Texas 4-H Roundup June 13-17

For more information about these events and others, go to <http://texas4-h.tamu.edu/youth/roundup/index.php>

• • • • •

### 4-H Healthy Lifestyles Invitational

Similar to 4-H Consumer Decision Making. Contact the Extension Office if you wish to start or lead a team.

### 4-H Recipe Rally

4-H members are invited to create a recipe and submit a video, via YouTube. Winners will be invited to attend 4-H State Roundup next June. More details can be found at <http://texas4-H.tamu.edu> on the Healthy Lifestyles Program page.

### 4-H Has Talent

Don't miss our very own American Idol Competition on Tuesday, June 14th. The audience will have the opportunity to vote via text message to select their very own winner. Deadline for entry submission is April 11th. For more information <http://texas4-h.tamu.edu/youth/roundup/index.php>.

### 4-H Veterinary Science Skillathon

**When:** June 16th at State Roundup

**Applications Due:** March 18

This contest is open to intermediate and senior 4-H members. For information go to <http://texas4-h.tamu.edu/youth/roundup/index.php>.

### Food Challenge

#### Final Four Cook-off

**When:** Throughout Wednesday Night Assembly

The top team in each respected category will battle it out and be considered the Food Challenge Champion.

#### Invitation Livestock Contest & Workshop

June 16th for intermediates and seniors.

#### Invitational Poultry Contest & Workshop

June 16th

# The Livestock Lowdown

## Tri State Fair Jr Board of Directors

Applications must be postmarked by April 29th and are available in the Extension Office for these positions. If you're interested, give us a call or drop by.

## Livestock Judging

District Judging is April 15th at the WTAMU Nance Ranch. It's very important that we keep practicing. Call Norissa at 206-1494 for information.

### Stock Show Association Meeting followed by Stock Show Board Meeting

**When: 7 p.m. Tuesday, April 19th**

**Where: Kuhlman Extension Center**

This is your chance to voice your ideas for the County Stock Show. If you have a suggestion, don't miss this very important meeting.

## Livestock Tag Order Deadlines

### STEERS

\$8/tag till April 14th      After April 14th, \$21/tag + postage till June 1st

### SHEEP (For State Fair Only)

\$8/tag till April 11th      After April 11th, \$21/tag + Postage until June 20th

### GOATS (For State Fair Only)

\$8/tag till April 11th      After April 11th, \$21/tag + Postage until June 20th

### SWINE (For State Fair Only)

\$8/tag till April 29th      After April 29th, \$11/tag till June 1st

After June 1st, \$11/tag + \$20/family till June 15th

**Tag order forms for all species are available at the County Extension Office.**



## Pork Leadership Camp

**When: June 5-11**

**Registration Deadline: April 18th**

**Cost: \$350/person**

The tour starts in Amarillo and concludes in Kansas City. Enrollment is limited to only 12 so hurry! It is open to any 4-H or FFA member that will be a high school junior or senior in the 2011-12 school year. Camp participants will receive training about media, quiz bowl and oral presentations. Contact the Extension Office for more information.

## Livestock Validation

### STEERS

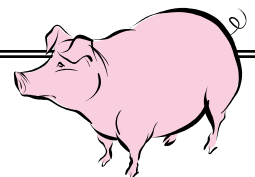
**Tuesday, June 21st (Time and Location TBA)**

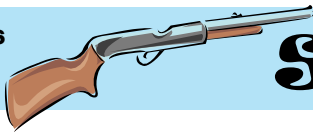
\*Any steer to be exhibited at 2011-2012 County or Major Stock Show must be validated to be eligible to show

### SHEEP, GOATS & SWINE (For State Fair Only)

**Wednesday, June 22nd (Time and Location TBA)**

\*Any Sheep, Goat or Swine to be exhibited at 2011 State Fair of Texas only must be validated to be eligible to show





# Shooting Sports

## Johnson County 4-H Shotgun Sports Fandango Buckle Shoot

**When:** May 21st & 22nd

**Where:** Fort Worth, TX

Register at [www.jc4hshotgunsports.com](http://www.jc4hshotgunsports.com)

Phone (817) 556-6370

## Texas 4-H Shooting Sports Extravaganza

**When:** April 9th

**Where:** Brownwood, TX

Event information can be found at <http://texas4-h.tamu.edu/youth/shootingsports/index.php#bmevents>



## Hereford Invitational Trap Shoot

**When:** Saturday, June 11th

**Where:** Hereford, TX

Contact Barbara Franks (806) 364-6432 or [dbamdfunks@yahoo.com](mailto:dbamdfunks@yahoo.com).

### VERY IMPORTANT!!

**(We can't stress this enough)**

#### Watch Your Family's E-mail Address

We will be communicating important 4-H information to your family's e-mail address in place of sending you a letter. This is a speedier and more dependable method of communication, and it is easier on the secretaries while we are so short handed. **You don't want to miss out on contest enrollments or other deadlines.**

**Relay for Life of Canyon**  
**7 p.m.-7 a.m., April 29-30**  
**WTAMU Buffalo Sports Park**

**Food, Entertainment, Games, Contests and Family Involvement**

**To get involved, organize a team, sign up as a survivor or caregiver, join the committee, sell or buy luminary, call: Wendy Collier-806-683-4215 or Angie Johnston-806-680-3822**

## Randall County 4-H Trapshoot

**When:** April 30th

**Where:** Amarillo Gun Club

Contact Greg Curry (806) 674-8788 for more information.

## District 4-H Rifle Contest

**When:** May 6-7

**Where:** Amarillo Rifle & Pistol Club

Registration must be done via **4-H Connect by April 15th**. Contact Kyle Stewart at 373-0713 or [kcstewart@ag.tamu.edu](mailto:kcstewart@ag.tamu.edu) for more information.

## Tom Green County 4-H Whiz Bang

**When:** Saturday, May 7th

**Where:** San Angelo, TX

Contact Gary Harness (325) 374-9037 or [wtwoodworking@suddenlink.net](mailto:wtwoodworking@suddenlink.net)

## Kerr 4-H Skeet & Trap Shoot

**When:** June 3-5

**Where:** Kerrville, TX

Registration available through [iclays.com](http://iclays.com).

Contact K. C. Cunningham, (830) 257-6568 or [kerr.registration@yahoo.com](mailto:kerr.registration@yahoo.com) for more information.



# Horse Happenings



## Big 5 Meeting

**When:** 6:30 p.m. Monday, April 25th

**Where:** Happy State Bank in Canyon

Big 5 meetings usually take place at 6:30 p.m. the last Monday of the month. Everyone is welcome to attend.

## Bandera County 4-H Horse Project Youth Rodeo Series

**When:** April 23rd, May 14th, Jun 11th & June 18th-Awards will be July 16th

**Where:** Mansfield Park Arena

Contact Dina Buettner (830) 796-1363 or Kim Fulenwider (210) 422-7474 for more information.

## Somervell County 4-H Horse Camp



**When:** June 6-8

**Where:** Glen Rose, TX

Contact the Somervell Extension Office at (254) 897-2809 for more information.

## District Horse Show June 10th & 11th WTAMU Horse Center

### Big 5 Shows

This year's rules registration forms and other information are posted on the Big 5 website [www.Big5horseshow.com](http://www.Big5horseshow.com).

**Registration will now cost \$40 per participant. Take your entry forms with horse registration and coggins to the first show you wish to compete in.**

Swisher County-April 9th	WTAMU Horse Center
Potter County -April 16th	WTAMU Horse Center
Moore County-May 14th	Dumas Livestock Barn
Deaf Smith Cnty-May 21st	WTAMU Horse Center
Randall County-June 4th	Range Riders Arena

## Horse Judging

**When:** 4:30 p.m. each Tuesday

**Where:** Pluhars' (unless told differently)

District Horse Judging is April 8th. Call Darwin, 679-3540, for information.

### 2011 County/State Horse Validation; Futurity and Grade Horse Forms

Available in February's 4-H Newsletter at <http://randall-tx.tamu.edu/newsletters.cfm> and at the Extension Office are two forms one of which has two parts that must be completed and submitted to the County Extension Office along with payment of \$10 per horse **on or before May 1, 2011**. Make checks payable to 4-H Livestock Fund. If you have not validated your horses for District and State, please bring your registration forms and coggins with you. We no longer have the copies which were turned in with your Big 5 entries.

The two forms:

I. Horse Project Validation Form—this must be completed for all horses that will be competing at any District or State 4-H Horse Show. If siblings are showing the same horse, then only one \$10 fee is required.

A. Horse Futurity Section of Horse Validation Form—this section of the form must be completed for all exhibitors planning on showing the following in 2011.

1. Yearling Halter Fillies and/or Longe Line
2. Yearling Halter Gelding and/or Longe Line
3. Two year olds for Two-Year-Old Futurity Project
4. Three year old horses nominated for Three-Year-Old Futurity Project
  - a. \$10 per head fee is charged if the Futurity Horse was not listed in the section above; however, only a one time fee for each horse.



II. Grade Horse I.D. Certificate Form—must be completed with all proper markings of horse indicated on form. Notice: a grade horse must be recorded on the validation form as well.

\* All forms and payment must be submitted to the County Extension Office on or before May 1st, checks payable to: 4-H Livestock Fund.



## Club News



### T Anchor 4-H Club

**When:** 5:30 p.m. Monday, April 11th

**Where:** WTAMU Horse Barn

**Community Service:** Painting WTAMU's jumps and etc. (dress or bring old painting clothes)

**Program:** following painting

**Meal:** Pizza provided by the club

**Reminder-PROGRAM AD SALES ARE DUE AT THIS MEETING**

**Leader:** Sheri Artho, 353-0056 or 220-9557, or slartho@hotmail.com

### Livestock Project Club

Contact Richard Dillehay, 433-2087, rdillehay@yahoo.com for meeting plans.

### Cowboy 4-H Club

Contact Leta Smith, 764-3338, or letak-smith@msn.com for information.

### Palo Duro 4-H Club

**When:** 6:30 p.m. Thursday, April 14th

**Where:** Kuhlman Extension Center

**Program:** TBA

Please Contact Laura & Bryan Smith at 655-5420 or bryanlaurasmith@aol.com for information.

### Sundown 4-H Club

**When:** 6:30 p.m. Thursday, April 28th

**Where:** Kuhlman Extension Center

**Program:** TBA

Contact Gary & LeAnne Vogel at 655-7645 or gltjv9011gltjv@aol.com for meeting plans.

### Bushland 4-H Club

Contact Norissa Aguirre, 206-1494, or fgaguir@aol.com for meeting plans.



## Project & Clover Kid News



### Rifle Project

Leaders: Scott (351-2385) or Kathryn (382-6105) Karcher or boergoatlady@gmail.com.

### Shotgun Project

Leader: Greg Curry, 655-0561

### Archery Project

Leader: John Kelly, 656-0433

### T-Anchor Pony Express Clover Kids

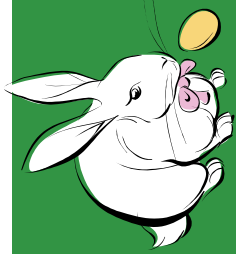
See T-Anchor club meeting plans.

Leader: Melisa Compos, 488-2326

### Rabbit Project



Leaders: Lynne McCright, 488-2661

Kathryn Karcher, 382-6105



# April 2011



SUN	MON	TUE	WED	THU	FRI	SAT	
					1	2	
3	4 Entomology 5-6:30 p.m.	5 Horse Judging, 4:30pm.	6	7 Consumer Deci- sion Making, 5:30-7 p.m.	8 District Fashion Show and Story Board Paperwork due	9 Swisher Big 5	
10 District Fashion Show & Story Board 4-H Connect entry deadline	11 Entomology 5-6:30 p.m. Sheep & Goat tag orders due	12 Horse Judging, 4:30pm.	13	14 Consumer Deci- sion Making, 5:30-7 p.m.; Steer tag orders due	15 District Livestock Judging	16 Potter Big 5	
17	18 4-H Connect registration deadline for Consumer Decision Making; Arts & Crafts en- try form due; Summer Clothing & Food Projects Planning Mtg	19 Horse Judging, 4:30pm.; County Coun- cil 6:30 p.m.; Entomology 5- 6:30 p.m.	20 Deadline to email Newsletter information to Extension Office	21 Consumer Deci- sion Making, 5:30-7 p.m.	22 -Holiday- County Offices Closed	23	
24 	25 Big 5 Meeting, 6:30 p.m.	26 Horse Judging, 4:30pm.; County Council & Adult Leaders 6:30 p.m.; Ento- mology 5-6:30 p.m.	27	28 Consumer Deci- sion Making, 5:30-7 p.m.	29 Tri State Fair Jr Board of Directors Apps Postmark deadline; Swine tag orders due	30 District Fash- ion Show; Dis- trict Consumer Decision Mak- ing; Arts & Crafts Show; District Story Board	
						Randall 4-H Trap Shoot	

## Texas AgriLife Extension Service

### Randall County 4-H

Herbert F & Jeannie Kuhlman Extension Center  
200 N Brown Rd  
Canyon, TX 79015

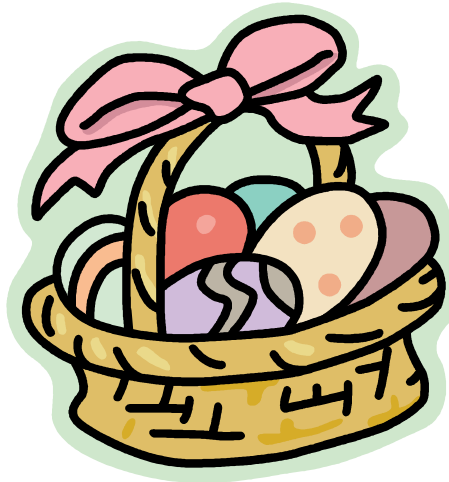
Phone: 806-468-5543  
Fax: 806-468-5547  
E-mail: randall-tx@tamu.edu

"To Make the Best Better"

Check us out on the web!  
<http://randall-tx.tamu.edu>

NONPROFIT ORGANIZATION  
U.S. POSTAGE PAID  
CANYON, TX  
PERMIT NO 99

**Happy  
Easter**



**From  
Extension**

*Leesa Wood Calvi*

Leesa Wood Calvi,  
County Extension Agent-  
Family & Consumer Science

*J. D. Ragland*

J.D. Ragland  
County Extension Agent-  
Agriculture

Educational programs of Texas AgriLife Extension Service are open to all people without regard to race, color, sex, disability, religion, age, or national origin.

The Texas A&M University System, U.S. Department of Agriculture, and the County Commissioners Courts of Texas Cooperating.

Information contained in this letter is for educational purposes only. Reference to commercial products or trade names is made with the understanding that no discrimination is intended and no endorsement by the Texas A&M AgriLife Extension Service of the Texas A&M University Systems is implied.