

Randall County 4-H Newsletter

Extension Office Staff

Kim Peters
4-H Youth Dev

Leesa Wood Calvi
CEA—FCS

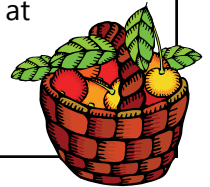
J.D. Ragland
CEA—Ag

Shannon Walsh
Urban Program Dir.

4-H Fruit Sales

Once again this year Randall County 4-H will be selling River Star Fruit as a fund raising activity. **Each family is asked to sell a minimum of 5 items.** By now your family should have received a brochure in the mail with a letter explaining what to do. If you have not, you may pick one up at the Extension office. All possible fruit packages and prices are indicated in the sale brochure. **All sale brochure orders and money must be returned to the Extension Office by 5pm on Thursday November 10.** Checks need to be made to Randall County Adult Leaders Association (ALA).

Truck delivery day will be Tuesday, Dec. 13th, or Wednesday December 14th, (call the Extension Office, 468-5543, to find out if the fruit has been delivered before making a trip to the office.) All orders must be picked up at the Extension Office the day after delivery (that day ONLY) and personally delivered by the seller to the purchaser. Please do your part in assisting with this county wide 4-H fund raising event.



Extension programs serve people of all ages regardless of socioeconomic level, race, color, religion, disability or national origin.

The Texas A&M System,
U.S. Department of
Agriculture, and County
Commissioners Courts of
Texas Cooperating.



Please welcome Kim Peters, our new 4-H Agent, who is joining our staff on November 1st. Kim graduated from Texas Tech with a Masters in Ag. Education in August and a Bachelors in December 2009. She also attended South Plains College. Kim coordinated student recruiting for the College of Ag. Sciences at Texas Tech. She was also camp counselor for the Texas 4-H Center. She grew up on the Yellow House Ranch of the XIT. Come by in November and get acquainted with her. We're looking forward to having her working at the Randall County Extension Office.

Since this will be Kim's first professional job and long distance move from home, the Adult Leader's Association is putting together a welcome basket for her. Let's do an old fashion "Pounding". Bring a pound of non-perishable food to put in her basket or a small gift card to the grocery store you like to shop. Whatever you would like to give, be sure to write a welcome note even if it's just on a sticky note to say we're glad to have her here. There's a large basket at the Extension Office.



County Food Show

Clover Kids

Ellysa Hveem Open Party

Juniors

Lainye Meador 1st Main Dish Casserole

Abby Burkham 1st Salsa

Mikayla Hvem 2nd Open Party Theme

Teagen Johnson 1st Open Party Theme

Intermediates

Bailey Johnson 2nd Open Party Theme

Kaleigh Meador 1st Open Party Theme

Emily Boschen 1st Salsa

Callie Hawkins 3rd Cake

Hannah Hawkins 2nd Cake

Craig Odom 1st Cake

Clay Burkham 1st Indoor & Outdoor Grilled
Main Dish & Beef Award

Seniors

Cassie Gabel 1st Open Party Theme

Brady Sayers 2nd Main Dish & Beef Award

Mackenzie Odom 1st Main Dish

We apologize if we've failed to recognize any of your 4-H accomplishments. Contact the Extension Office, and we'll be glad to mention them in next month's newsletter.

Because they won 1st place with their record book at state, Sarah McCarty and Jordan Vogel will be attending the Texas 4-H Leadership Conference in Washington, D.C. November 24-29th. What an honor. Congratulations!

Additional Tri State Fair Results

Jamie Pennington—4th place steer

We apologize for overlooking this, and congratulate her for placing.

4-H Academic Eligibility

You must be enrolled in 4-H and be making passing grades in school before you can compete in any 4-H contest. The reason we ask you to complete an entry notification form for county contests before report forms are due is because we must check with your school to see if you are passing at least two weeks in advance of the contest. Extension sends a letter to your school with the contest name, date and whether competition will require you to miss any school. **Don't forget that it is still your responsibility to let your school know the exact dates you will be absent from school and to get assignments from your teachers before leaving.** If you are not academically eligible to compete, the school will notify a county agent who will let one of your parents know that there is a problem with your grades.



County Council

When: 6:30 p.m. Tuesday, November 22nd

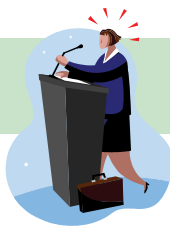
Where: Kuhlman Extension Center

Adult Leaders

When: 6:30 p.m. Tuesday, November 29th

Where: Kuhlman Extension Center

We'll be making plans for the Stock Show Concession Stand, discussing fruit delivery and setting a budget. Come meet Kim, our new 4-H agent.



State Roundup 2012 June 11-15, 2012

Several changes have been made to State Roundup 2012. This year it will be held on the Texas Tech University campus in Lubbock. In addition to the new location, numerous contest changes are also taking place. For a complete list of these changes, go to the Texas 4-H Roundup website at <http://texas4-h.tamu.edu/youth/roundup/index.php>

County Roundup

When: 4-7 p.m. Thursday, November 3rd

Where: Kuhlman Extension Center

District Roundup is December 3rd. Deadline to register on 4-H Connect for District is Thursday, November 17th.

4-H Clothing Project Meeting

Hold Mondays in January-March from 4-6 p.m. for clothing classes.

Frocks and Togs Fit for Kids

When: Beginning November 19th

Where: Panhandle Plains Historical

Museum Textile Gallery

Frocks and Togs: Children's Textiles is an exhibit of baby, toddler and young children's clothes as well as shoes, hats and capes from the first half of the past century. This would be an exceptional exhibit to visit and include on your fashion show entry form.

4-H Recipe Rally

The contest is open to Intermediates and Seniors, with the top three in each age division invited to participate in the 2012 Texas 4-H Roundup. The theme for the contest is "Summer Snacks" More information is available at http://texas4-h.tamu.edu/projects/healthy_lifestyles/index_healthy_lifestyles.php.



Scholarships (For graduating seniors)



2012 Randall County Junior

Livestock Association Scholarships

Applications due: December 15th.

Scholarship applications are available at the Extension Office or on our web site Randall-tx.tamu.edu under forms. **Completed applications are due back to the Extension Office by December 15th.**

2012 Texas

4-H Opportunity Scholarship

Scholarship applications will not be released until around November 15, 2011. If you're a graduating senior and you're interested in applying for this scholarship, here are some things you can be working on in the meantime to prepare for the application.

- Ensure you have taken the SAT or ACT. Minimum requirements on scores are 1350 on SAT and 19 on ACT.
- Begin working on your Free Application for Federal Aid (FAFSA). This is a free application and can be found at fafsa.gov.

Substitution Rules for Roundup

The district and state have substitution rules for educational presentations, quiz bowls and judging teams. Remember, eligibility has to be checked for substitutes too. If only 3 compete on a team at county or district, only 3 can go to state and only one substitution is allowed.

Food Challenge

Christi Ramos is coaching the Food Challenge teams. Contact her at 676-8469 or ramos.christi@gmail.com and let her know you want to compete. They will be practicing:

November 12th 2-3 p.m.

The district contest is November 19th.



Junior Leadership Retreat

When: November 11-13, 2011

**Where: Texas 4-H Conference Center
in Brownwood**

Who: Jr & Int 4-H members

**Cost: \$105 for youth and \$70 for adult
chaperones**

Check out the 4-H Center website for registration information at texas4hcenter.tamu.edu.

Operation Bit of Home

Donate new and used DVDs and help the morale, welfare and relaxation of our military men and women serving overseas. Please mail DVDs to either of the following addresses:

OPERATION: A Bit of Home

Attn: Ken Meyer

324 N 10th St, Unit B

Nolanville, TX 76559

Or *Bell County Extension Office*

1605 N Main, Rm 102

Belton, TX 76513

Please include 75 cents per disk to help with shipping costs.



“Smitten by Mittens, Love for Gloves” Campaign

The Randall County 4-H Council has officially launched the county wide Community Service Project “Smitten for Mittens, Love for Gloves” campaign. 4-Hers and families are asked to donate gently used or new mittens and/or gloves of all sizes. All donated items will be divided into two groups and donated to two charitable groups selected by the 4-H County Council. Simply drop your donated items by the Extension office any time and help us keep all hands warm during this upcoming winter season. Remember its “Smitten for Mittens, Love for Gloves”. The campaign ends December 10th.

New 2011-2012 4-H Recordkeeping System

Centras: November 2nd & 9th

- Parts of the report form will be standardized to allow for ease of completion and judging.
- Much of the data from previous record books that a member may have saved on their home computers may be “cut and pasted” into the new forms
- All 4-H members will use the new online forms or new paper forms that will be available for download from the Texas 4-H website beginning in the 2011-2012 4-H Year.
- Record books will still be printed and turned in (in hardcopy form)

If you have any questions, please contact Derrick Bruton at d-bruton@tamu.edu or Jodi McManus at j-mcmanus@tamu.edu.

County training is planned for May 31st. Call Kim Peters if you want to attend or have any questions.

Entomology



Are you interested in bugs? Contact Jeanice Kett at 282-4240 to find out how you can learn about them and compete in the Ento ID contest this spring.

There will be a Fall Photography Series in College Station. Contact Amy Dromgoole at 979-458-4227 or amy.dromgoole@tamu.edu for more information.



2012 Texas 4-H Senior Photography Contest

This year's theme category is “Trains” (both real and model). Photos must be either of the engine or a train car. Entries will be done through 4-H Connect from April 1, 2012 to April 15, 2012. The rules and guidelines are posted on the Texas 4-H and Youth Development Website at http://texas4h.tamu.edu/youth/photography/index_youth_photography.php.



Texas 4-H Beekeeping Essay Contest

Entry Deadline: January 13, 2012

The topic for this year's essay is “The Results of Honey Bee Pollination in My Community”. Note: For 2012, only essays submitted electronically will be accepted. For more information, go to the state 4-H website.





Horse Happenings

T-Anchor Annual Awards Banquet

When: 6:30 pm. Monday, November 21st

Officers and leaders along with the decorating committee need to show up 1 hour early

Where: AQHA Heritage Museum

Desserts: All families are asked to bring a dessert, enough to feed 8 to 10

Community Service: Coats for Eveline Rivers Winter Coat Drive

Food is catered by Napoli's Italian Food; and the cost is \$10 per person in advance, \$12 at the door.

Families with 4 or more get a price break of 1/2 price for each immediate family member after the first 4 paid plates. Call Sheri Artho, 220-9557, or solartho@hotmail.com for more information.

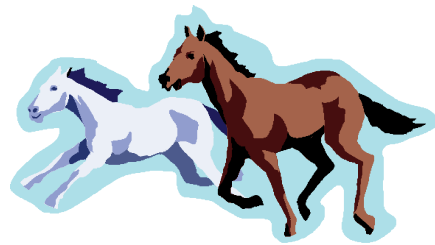
Camp Wildfire

When: 9-2 Saturday, November 12th

Where: Panhandle Plains Historical Museum

Deadline for registration is November 6th

Participants will learn about the care of wild mustangs and the Bureau of Land Management adoption program through hands-on activities and a live demonstration. There will be a chuck wagon dinner at the T-Anchor Ranch house on the east lawn of the museum. The cost of the camp is \$25 which includes the meal and a Camp Wildfire sweatshirt. To register, email Millie at mvanover@pphm.wtamu.edu or call 651-2249. For more information about the museum go to its web site www.panhandleplains.org.



Jr & Int Horse Quiz Bowl

When: 6 p.m. each Tuesday

Where: 650 E Country Club Rd

Deanna Wilkerson will be coaching the Junior and Intermediate Horse Quiz Bowl teams. Contact her at 488-2811 if you need more information.

Big 5 Meeting

When: 6:30 p. m. Monday, November 28th

Where: Happy State Bank in Canyon

Big 5 meetings usually take place at 6:30 p.m. the last Monday of the month. Everyone is welcome to attend.

Sr Horse Quiz Bowl Practice

When: To be decided

Where: 16301 Country Road, Canyon

This is for 4-H member 14 and older who would enjoy learning about the horse (physical, usage, contests, language and more about question/answer contests). Contact Mary Beth Sayers at 655-1260, or sayersmb@suddenlink.net for practice dates.

Horse Judging

When: 4:30 p.m. each Tuesday

Where: Pluhars' (unless told differently)

Call Darwin, 679-3540, for information.

The Livestock Lowdown

RCJLS Sale Give-Away

Starting at validation, youth will be receiving Give-Away tickets which they can sell to help raise money for the Randall County Stock Show Sale. A portion of the proceeds from the tickets you sell will be added to the check for your animal. Contact Norissa Aguirre, 206-1494, or Gary Vogel, 655-7645, for tickets and information.

Randall County Stock Show Sale Committee Meeting

When: 7 p.m. Tuesday, December 6th

Where: Kuhlman Extension Center

Parents and livestock exhibitors are encouraged to become involved with the show and sale. There's a committee to fit everyone. Why don't you volunteer to help make this year's show and sale the best ever!

R. W. "Digger" Howard 4-H Livestock Barn Feeding Facility Pen Request Requirements

Many of you may still not be aware of our phenomenal feeding facility which is available to all Randall County 4-H Youth. The Digger Howard 4-H Barn is located on South Georgia directly behind the Randall County Jail. Two livestock feeding barns are equipped with 12-8x8 indoor pens with 16-foot runs and automatic stainless steel heated waterers. Additionally, each pen has its own feed room. All pens are designed for small animal projects (lambs, goats or swine.) To reserve your pen(s) it's simple, just come by the Extension office and complete the pen contract agreement form. A \$100 pen rent fee will be required with \$50 being reimbursed to you after we verify that your pen has been cleaned up. Remember its available for all Randall County 4-Hers.



"Quality Counts" Training/Testing

A new requirement for all 2012 County as well as all major stock show participants is the Quality Counts Training and Testing. This is an online training that basically covers livestock feeding and medication as well as ethic topics. It takes about 20 minutes to complete the training and test. There is a junior level as well as a senior level test. Juniors must pass their test only once at which time you will be issued a certificate of completion number. When they become a senior they must take and pass a senior test at which time you will be issued another completion number. **THESE NUMBERS ARE VERY IMPORTANT** as it will be a requirement to be recorded on all major show entry forms. **BE SURE TO KEEP UP WITH IT.**

To access the Quality Counts Training and Testing, simply go to the following website, log in, provide your name, address, etc. and start the training. Once the training is reviewed, then take the test. You may take it as many times as needed. To learn more about verification process, go to <http://qualitycounts.tamu.edu>. **AFTER YOU PASS THE TEST, PRINT OUT THE CERTIFICATE AND KEEP UP WITH IT. MEMBERS WILL HAVE TO HAVE THAT CERTIFICATE NUMBER TO ENTER STOCK SHOWS IN NOVEMBER.** Call J.D. if you have any questions. Here's the login instructions-

- **Juniors** 9-13 years of age by September 1st of current year.

Go to the Quality Counts web page at <http://qualitycounts.tamu.edu>. On the top bar click on Texas Trail, then click on the picture of the Texas Trail logo to get started watching the presentation. Then on the top bar again, click on Verification then follow Junior/Senior directions below.

- **Seniors** 14-19 by September 1st of current year

Go to the Quality Counts web page at <http://qualitycounts.tamu.edu>. On the top bar click on Curricula then click on the Quality Counts Book and CD (this has information and examples of what will be on the test). Study the information. Then on the top bar again, click on Verification and follow Junior/Senior directions below.

Junior and Seniors

- ENTER THE EXACT NAME YOU USE FOR MAJOR SHOW ENTRIES
- CHOOSE 4-H AND FFA IF YOU ARE UNSURE WHICH YOU WILL SHOW UNDER

Click on Take the test and become verified. You must make a score of 80 or better to pass. Take the test as many times as necessary.

After you receive your verification number, we recommend that you go into your 4-H Connect family profile and record it in the notes box. That way if you leave it at home on entry day, you can pull it up on our computer.

The Livestock Lowdown

Stock Show Calf Scramble Information

Fort Worth—fwssr.com

Houston—hlsr.com till Dec. 1st

County Stock Show
Entry deadline - December 15th

Swine Validation

Tag Order Deadlines

(For County & Major Shows)

After October 31st-\$12 per tag + \$20/family
per order Until November 9th

Please note that this information is somewhat different from dates and prices in Important Dates handout given at August New Livestock Show Requirements Meetings. The 2012 Swine Validation Tag Order Form is available at <http://randall.agrilife.org/website> under forms.



D1 4-H Beef Project Family Training Series

Session 1—April 21

Beef Project Selection and Tour
Kris Black Hereford Ranch, Crawford, OK
Chartered bus will depart from Amarillo at 8a.m.

Session 2—June 2

Beef project daily care, facility tour and showmanship instructions and contests
Wellington Fairgrounds
Bring your own personal steer or heifer

Session 3—October 29

Beef project fitting and showmanship
Moore County Community Building in Dumas
Bring your own personal steer or heifer

A one time cost (lunch provided) per 4-H youth participating is \$75 and \$50 for adults. For more information, contact J. D. at 468-5543, or 463-0245.

Complimentary 2-Day Cattle Clinic

When: November 5-6

Where: Hereford, TX

This free clinic is sponsored by Stock Show U/Sullivan Supply. For more information contact Brian Martin, 806-578-4729 or Jeff Sargent, 903-624-7265.

Validation for County And Major Stock Shows

Swine @ Digger Howard 4-H Livestock Barn:

November 19th 9:30 a.m.-4 p.m.

@ Canyon FFA School Farm

November 20th 12:30 p.m.-6:30 p.m.

Rabbits @ Digger Howard 4-H Livestock Barn

November 13th 2-4 p.m.

Major Stock Show Entry Days in November

7th (8 a.m.-Noon & 1 p.m.-7 p.m.)

8th-10th (8 a.m.-Noon & 1 p.m.-5 p.m.)

Swine Castration

When: 3:30-dark Tuesday, November 8th

Where: Canyon Ag Farm

You must notify J. D. at 463-0245 if you wish to bring your swine.

4-H Rabbit Extravaganza

Where: Gatesville, TX

When: November 19th

http://texas4-h.tamu.edu/youth/rabbit%20extravaganza/index_rabbit.php



Livestock Project Blue Form-If you plan on showing at one of the 2012 stock shows, please fill out the 2012 Stock Shows Livestock Project Form available at the Extension Office or on our web site Randall-tx.tamu.edu under Forms. As soon as you know your intentions, let's get one filled out

Stock Show Dates

Top of Texas: Jan 7-8

San Antonio: Feb 9-26

Odessa: Jan 5-14

San Angelo: Feb 16-26

Randall County: Jan 20-23

Houston: Feb 28-Mar 18

Ft Worth: Jan 13-Feb 4

Star of TX: Mar 9-24



Club News



T Anchor 4-H Club

Year End Banquet-November 21st
(see information on Horse Happenings page 5 of this newsletter)

Leader: Sheri Artho, 353-0056 or 220-9557, or slartho@hotmail.com

PLEASE CHECK YOU EMAILS DAILY. THIS WILL BE OUR CLUB'S WAY OF SENDING INFORMATION AND UPDATES

Livestock Project Club

When: 3 p.m. Sunday, November 13th

Where: Kuhlman Extension Center

Program: TBA

This club is in need of a new club manager and assistant manager. Richard has done a great job, but is no longer able to lead the club due to personal as well as work related conflicts. This is one of Randall County's largest 4-H clubs with current membership of 89 strong. So, you can see the importance of maintaining leadership support for this club. If anyone is willing to serve, contact J. D at the Extension Office and he will provide you with details.

Cowboy 4-H Club

Contact Tricia Odom, 764-3560, or triciaodom@sbcglobal.net for information.

Palo Duro 4-H Club

No club meeting this month

Members are encouraged to attend County Roundup 4-6 p.m. Thursday, November 3rd.

Leaders: Laura & Bryan Smith, 655-5420, or bryanlaurasmith@aol.com

Sundown 4-H Club

When: 6:30 p.m. Thursday, November 10th

Where: Kuhlman Extension Center

Program: TBA

Contact Gary & LeAnne Vogel at 655-7645 or gltjv9011gltjv@aol.com for meeting information.

South Amarillo 4-H Club

When: 6:30 p.m. Monday, November 14th

Where: Digger Howard Livestock Building

Leader: Norissa Aguirre, 206-1494, or fgaguir@aol.com for information.



Project & Clover Kid News



Rifle Project

Leaders: Scott (351-2385) or Kathryn (382-6105) Karcher or boergoatlady@gmail.com.

Shotgun Project

Leader: Greg Curry, 655-0561, or gdcurry@amaonline.com

Photography

Leader: Cathy McCarty, 282-8176, or jimorcathy@suddenlink.net

Horse Quiz Bowl

Mary Beth Sayers, 655-1260, or sayersmb@suddenlink.net

T-Anchor Pony Express Clover Kids

See T-Anchor club meeting plans.

Leader: Melisa Compos, 488-2326

Rabbit Project

Leaders: Lynne McCright, 282-3627, or lynne@famcampserv.com & Kathryn Karcher, 382-6105

Food Challenge

Leader: Christi Ramos, 676-8469, or Ramos.christi@gmail.com

October 2011

To: All 2012 Randall County Junior Livestock Show Exhibitors

Each year Randall County 4-H and FFA Youth Livestock exhibitors have the opportunity to apply as a Randall County Junior Livestock Ambassador. A total of 12 Ambassadors will be selected by application and interview process.


Ambassadors (12 selected) will serve as junior leaders and will assist show and auction sale officials during this year's Sixty Fourth Annual Randall County Junior Livestock Show set for January 20-23, 2012. Criteria for Junior Ambassador include:

- 1) Must have exhibited livestock at the RCJL Show
- 2) Must be **9-18 years** of age as of August 31, 2011
- 3) Be willing to serve in leadership role assisting show officials during show and auction sale
- 4) Be prepared to promote the 2012 RCJL Show at any time to Civic clubs, T.V., radio and newspaper
- 5) **MUST BE PRESENT FOR AN INTERVIEW** on Monday, November 21, 2011 between 4:30 and 6 p.m.
- 6) Must wear Ambassador shirts during entire Randall County Stock Show (expect while you are actually showing) and auction sale

This is a youth leadership opportunity that is directly associated with the Randall County Junior Livestock Show. The enclosed applications are due into the Extension office by 5pm Thursday, **November 10, 2011**. All potential candidate interviews will be held on Monday, November 21, 2011 starting at 4:30pm. A three judge panel will interview each applicant with questions that primarily pertain to your livestock experience, what you've learned along with various leadership roles you have held. Each interview is scheduled for 10 minutes; however most will not run that long.

If you choose to submit an application, please call the Randall County Extension Office at 468-5543 to schedule your interview time on or before 5pm. **November 10, 2011**.

Sincerely,



J. D. Ragland
County Extension Agent-Agriculture

Kuhlman Extension Center
200 N Brown Rd
Canyon, TX 79015

Tel: 806-468-5543
Fax: 806-468-5547
Randall-bx@ag.tamu.edu
<http://Randall-bx.ag.tamu.edu>

2012 RCJLS Junior Livestock Ambassador Application

Due to Extension Office by 5 p.m. Thursday, November 10, 2011

There will be 12 Ambassadors Selected (9-18 years old)

Name: _____

Phone #: _____

Email Address: _____

Please circle your collared t-shirt size: **Youth:** S / M / L / XL **Adult:** S / M / L / XL

I've had experience with:

Sheep for _____ years

Goats for _____ years

Heifers for _____ years

Swine for _____ years

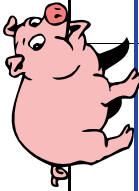
Rabbits for _____ years

Please attach a separate sheet with the answer to the following question, preferably typed.

Ambassador Candidates - Why do you want to be a Junior Livestock Ambassador?

(For more information, contact J. D. Ragland, 468-5543)
(Interviews to become a Jr. Livestock Ambassador will be on November 21, 2011)

November 2011

Sun	Mon	Tue	Wed	Thu	Fri	Sat
						
	Major Stock Show Entry Days: November 7th (8 a.m.-Noon & 1 p.m.-7 p.m.) 8th-10th (8 a.m.-Noon & 1 p.m.-5 p.m.)	Horse Judging, 4:30 pm; Jr/Int Horse Quiz Bowl Practice 6 p.m.	4-H Record keeping Centra 2	County Roundup 3	4	5
	6	Horse Judging, 4:30 pm; Jr/Int Horse Quiz Bowl Practice 6 p.m.; Swine Castration 8	4-H Record keeping Centra; Last Day to Order Swine Tags 9	4-H Fruit Sales Livestock Ambassador Entry Deadline 10 Fruit Sales Orders Due	-Holiday-County Offices Closed 11	Food Challenge Practice 2 p.m. Camp Wildfire 12
	7	4-H Fruit Sales	4-H Fruit Sales	4-H Fruit Sales		
Rabbit Validation 13	14	Horse Judging, 4:30 pm; Jr/Int Horse Quiz Bowl Practice 6 p.m.		Welcome!	17	18
Swine Validation 20	T-Anchor Annual Awards Banquet 21	Horse Judging, 4:30 pm; Jr/Int Horse Quiz Bowl Practice 6 p.m. County Council, 6:30 p.m.		Kim!	24	25
Deadline to email Newsletter information to Extension Office 27	Big 5 Meeting, 6:30 p.m. 28	Horse Judging, 4:30 pm; Jr/Int Horse Quiz Bowl Practice 6 p.m. Adult Leaders Meeting 6:30	30		-Thanksgiving Holiday-County Offices Closed	
						26
						19

Texas AgriLife Extension Service

Randall County 4-H

Herbert F & Jeannie Kuhlman Extension Center
200 N Brown Rd
Canyon, TX 79015

Return service requested

Phone: 806-468-5543
Fax: 806-468-5547
E-mail: randall-tx@tamu.edu

"To Make the Best Better"

Check us out on the web!

<http://randall.agrilife.org/>

**HAPPY
THANKSGIVING**



**FROM
EXTENSION**

Leesa Wood Calvi
Leesa Wood Calvi,
County Extension Agent-
Family & Consumer Science

Kim Peters
Kim Peters
County Extension Agent-
4-H Youth Development

J. D. Ragland
J.D. Ragland
County Extension Agent-
Agriculture

Educational programs of Texas AgriLife Extension Service are open to all people without regard to race, color, sex, disability, religion, age, or national origin.

The Texas A&M University System, U.S. Department of Agriculture, and the County Commissioners Courts of Texas Cooperating.

Information contained in this letter is for educational purposes only. Reference to commercial products or trade names is made with the understanding that no discrimination is intended and no endorsement by the Texas A&M AgriLife Extension Service of the Texas A&M University System is implied.