

Randall County 4-H Newsletter

Extension Office Staff

Kim Peters
4-H Youth Dev

Leesa Wood Calvi
CEA—FCS

J.D. Ragland
CEA—Ag

Shannon Walsh
Urban Program Dir.



Extension programs serve people of all ages regardless of socioeconomic level, race, color, religion, disability or national origin.

The Texas A&M System, U.S. Department of Agriculture, and County Commissioners Courts of Texas Cooperating.

Scholarships (For graduating seniors)



2012 Randall County Junior

Livestock Association Scholarships

Applications due: December 15th.

Scholarship applications are available at the Extension Office or on our web site Randall-tx.tamu.edu under forms. **Completed applications are due back to the Extension Office by December 15th.**

2012 Texas

4-H Opportunity Scholarship

Completed Applications are due to the Extension Office by February 6, 2012

Scholarship applications, instructions and an online training module are **now available at the Texas 4-H and Youth Development web-site at <http://texas4-h.tamu.edu> (youth->scholarships)**. A Centra workshop is scheduled for 7-9 p.m. December 12th. Your computer will need a good internet connection and speakers. Registration is limited to the first 125, at <http://webconference.tamus.edu/main/tce/> using the Event ID: LLP258281.

There will be a workshop at the District Office on Monday, December 12th for Junior and Senior High School students. Registration must be done by noon the 12th on 4-H Connect, and there will be a \$15 fee. If you would like a County Extension Agent to review your application, call the Extension Office. Interested graduating seniors should also:

- Ensure you have taken the SAT or ACT. Minimum requirements on scores are 1350 on SAT and 19 on ACT.
- Begin working on your Free Application for Federal Aid (FAFSA). This is a free application and can be found at fafsa.gov.





District Food Show



Food Challenge Teams

Competing were teams:

1-Sarah Ramos, Katie Mischak, Emily Boschen and Chase Isbell

2-Ana Ramos, Mikayla Hveem and Colin Londenberg

Juniors

Lainye Meador 2nd

Abby Burkham competed

Teagen Johnson 3rd

Main Dish Casserole

Salsa

Open Party Theme

Intermediates

Kaleigh Meador competed

Emily Boschen competed

Craig Odom competed

Clay Burkham 3rd

Open Party Theme

Salsa

Cake

Indoor & Outdoor Grilled Main Dish

Seniors-1st place seniors qualify to compete at State Roundup in June.

Cassie Gabel competed

Mackenzie Odom 1st

Open Party Theme

Main Dish

South Plains Fair

Jace Owen Reserve Grand Champion Lamb

Karlie Harter 4th swine

Cody Harter 4th swine

Texas State Fair

Jace Owen 1st medium wool lamb

Quay Owen 3rd medium wool lamb

Brynn Owen 4th medium wool lamb

Dallas State Fair

Karlie Harter 3rd swine

Cody Harter 7th swine

We apologize if we've failed to recognize any of your 4-H accomplishments. Contact the Extension Office, and we'll be glad to mention them in next month's newsletter.

District 1 4-H Dance



When: 7-10 p.m. Saturday, December 10th

Where: Activities Building in Claude, TX

Cost: \$3/person

This will be a safe drug and alcohol free event. For more information contact Wendy Hazzard, 806-826-5243 or Nathan Carr, 806-823-2522.

Attention: Club and Project Leaders

If you have something you would like placed in the 4-H newsletter, please e-mail the Extension Office at Randall-tx@tamu.edu by the 20th of each month or the following Monday if the 20th is on the weekend.

Operation Bit of Home

Donate new and used DVDs and help the morale, welfare and relaxation of our military men and women serving overseas. Please mail DVDs to either of the following addresses:

OPERATION: A Bit of Home

Attn: Ken Meyer

324 N 10th St, Unit B

Nolanville, TX 76559

Or *Bell County Extension Office*

1605 N Main, Rm 102

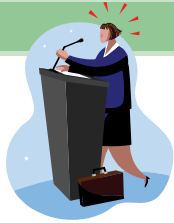
Belton, TX 76513

Please include 75 cents per disk to help with shipping costs.

"Smitten by Mittens, Love for Gloves" Campaign



The Randall County 4-H Council has officially launched the county wide Community Service Project "Smitten for Mittens, Love for Gloves" campaign. 4-Hers and families are asked to donate gently used or new mittens and/or gloves of all sizes. All donated items will be divided into two groups and donated to two charitable groups selected by the 4-H County Council. Simply drop your donated items by the Extension office any time and help us keep all hands warm during this upcoming winter season. Remember its "Smitten for Mittens, Love for Gloves". The campaign ends December 10th.



State Roundup 2012 June 11-15, 2012

Several changes have been made to State Roundup 2012. This year it will be held on the Texas Tech University campus in Lubbock. In addition to the new location, numerous contest changes are also taking place. For a complete list of these changes, go to the Texas 4-H Roundup website at <http://texas4-H.tamu.edu/youth/roundup/index.php>

District Roundup & Horse Quiz Bowl

When: Saturday, December 3rd
Where: WTAMU

Substitution Rules for Roundup

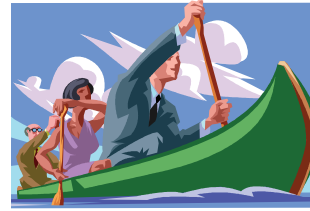
The district and state have substitution rules for educational presentations, quiz bowls and judging teams. Remember, eligibility has to be checked for substitutes too. If only 3 compete on a team at county or district, only 3 can go to state and only one substitution is allowed.

4-H Healthy Lifestyles Invitational

This contest is held during State Roundup. For information go to http://texas4-H.tamu.edu/projects/healthy_lifestyles/index.php.

4-H Recipe Rally

The contest is open to Intermediates and Seniors, with the top three in each age division invited to participate in the 2012 Texas 4-H Roundup. The theme for the contest is "Summer Snacks" More information is available at http://texas4-H.tamu.edu/projects/healthy_lifestyles/index_healthylifestyles.php.



Texas 4-H Outdoor Challenge

When: June 30-July 1, 2012

**Where: Texas 4-H Conference Center
in Brownwood**

Learn, practice and train to compete in a series of ten outdoor events that will challenge you both physically and mentally. Visit the website at www.tuinyurl.com/tx4hoc. Contact Derrick Bruton d-bruton@tamu.edu if you have any questions.



4-H Clothing Project Meeting

Hold Mondays in January-March from 4-6 p.m. for clothing classes.

Consumer Decision Making

When: 5:30 p.m. Friday, December 16th

Where: Kuhlman Extension Center

If you're interested in joining a Consumer Decision Making team either come to this meeting or contact Tricia Odom at 335-5064 or mackenzieodom@gmail.com.

Frocks and Togs Fit for Kids

When: Beginning November 19th

**Where: Panhandle Plains Historical
Museum Textile Gallery**

Frocks and Togs: Children's Textiles is an exhibit of baby, toddler and young children's clothes as well as shoes, hats and capes from the first half of the past century. This would be an exceptional exhibit to visit and include on your fashion show entry form.

MASH Camp

When: June 24-26, 2012

**Where: Texas A&M University in
College Station**

The camp is open to youth ages 13-17. Camp highlights include exploring careers in medicine, athletic training, safety and health through hands-on learning at the Texas A&M College of Medicine. For more information, contact Courtney Dodd at cfdodd@ag.tamu.edu.



2012 4-H Conference Center Events

Jan 6-8	4-H Teen Retreat
April 23-27	Spring Fling
July 3-6	Horizons Camp
July 22-25	Prime Time I
July 23-25	Mission Impossible
July 25-28	Prime Time II

Check out the 4-H Center website for registration information texas4hcenter.tamu.edu.

VERY IMPORTANT!!

(We can't stress this enough)

Watch Your Family's E-mail Address

We will be emailing the 4-H newsletter and communicating important 4-H information to your family's e-mail address with "**Randall 4-H**" in the **subject line** in place of sending you a letter. Many of these will come from Sue because organizational policy does not allow us to use the Randall County box for outgoing mail. **You don't want to miss receiving your newsletter, information on contest registrations or deadline reminders.**

New 2011-2012 4-H Recordkeeping System

Parts of the report form will be standardized to allow for ease of completion and judging.

- Much of the data from previous record books that a member may have saved on their home computers may be "cut and pasted" into the new forms
- All 4-H members will use the new online forms or new paper forms that will be available for download from the Texas 4-H website beginning in the 2011-2012 4-H Year.
- Record books will still be printed and turned in (in hardcopy form)

If you have any questions, please contact Derrick Bruton at d-bruton@tamu.edu or Jodi McManus at j-mcmanus@tamu.edu.

County training is planned for May 31st. Call Kim Peters if you want to attend or have any questions.



Entomology

Are you interested in bugs? Contact Jeanice Kett at 282-4240 to find out how you can learn about them and compete in the Ento ID contest this spring.

2012 Texas 4-H Senior Photography Contest



This year's theme category is "Trains" (both real and model). Photos must be either of the engine or a train car. Entries will be done through 4-H Connect from April 1, 2012 to April 15, 2012.

The rules and guidelines are posted on the Texas 4-H and Youth Development Website at http://texas4h.tamu.edu/youth/photography/index_youth_photography.php.

Texas 4-H Beekeeping Essay Contest

Entry Deadline: January 13, 2012

The topic for this year's essay is "The Results of Honey Bee Pollination in My Community". Note: For 2012, only essays submitted electronically will be accepted. For more information, go to the state 4-H website.



Shooting Sports

Keep an eye on the website, http://texas4-H.tamu.edu/youth/natural_resources/index_natural_resources.php to find out about a host of shooting sports projects changes which will be unveiled very soon.

Headquarters Coach Training

When: January 21-22

Where: College Station



Registration must be made on 4-H Connect by January 6th.

2012 Postal Leagues

(Excluding Shotgun Leagues)

Registration on 4-H Connect is open till December 16th



Horse Happenings

Jr & Int Horse Quiz Bowl

When: TBA

Where: 650 E Country Club Rd

Deanna Wilkerson will be coaching the Junior and Intermediate Horse Quiz Bowl teams. Contact her at 488-2811 if you need more information.

Summer Horsemanship School

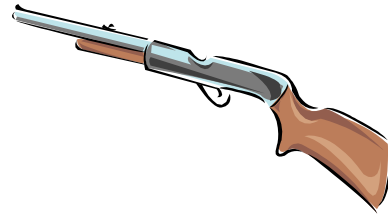
For more information, go to <http://agriferegister.tamu.edu/> and click on Events. Then scroll down the page close to the bottom and find 40th Annual Texas AgriLife Extension Summer Horsemanship School Program. If you have any questions, call Teri Antilley 979-845-5264 or email tjantilley@ag.tamu.edu.

Rifle Project Practices

When: Monday, January 9th at 6p.m.-new shooters (parents encouraged to attend) and 6:45-returning shooters

Where: Amarillo Rifle and Pistol Club (www.amarillorpc.com)

Each Monday after that, we will be practicing at 6p.m. Cost is \$2 range fee per shooter. Ammo is available for \$2.50 per box of 50. If you bring your own ammo, it must be 40 grain, lead tip only (no jackets) and muzzle velocity of 1250 ft/sec or less. Rifles and other equipment will be provided by the club. You will need to bring your own eye protection. Ear plugs are available for purchase if you don't bring your own. Contact Scott, 351-2385, or Kathryn, 382-6105, with any questions. You may also email boergoatlady@gmail.com.



Big 5 Meeting

No Meeting in December

Big 5 meetings usually take place at 6:30 p.m. the last Monday of the month. Everyone is welcome to attend.

Horse Judging

When: 4:30 p.m. each Tuesday

Where: Pluhars' (unless told differently)

Call Darwin, 679-3540, for information.

Summer Horsemanship School

When: May-June 2012

For more information go to <http://animalscience.tamu.edu/academics/equine/summer-horsemanship/hosting/index.htm>

The Livestock Lowdown

Ft Worth/San Antonio Stock Shows

Travel Meeting



When: Approx 4 p.m. Sunday, Jan 22nd

Where: WT Horse Center Grand Stands

This year's travel meeting will take place after the stock show clean up. At least 1 member per family must attend for all exhibitors planning to attend and exhibit at either the Ft Worth or San Antonio Stock Shows. This is a very important meeting at which livestock travel plans for our county group must be made. **MARK YOUR CALENDAR!!**

RANDALL COUNTY JUNIOR LIVESTOCK SHOW SCHEDULE

Friday, January 20

- 3-6 p.m. Weigh in of all species
- 5 p.m. Begin Heifer Show
- Begin Breeding Gilt Show following the Heifers
- 5:30 p.m. Rabbits must be in place
- 7:00 p.m. Begin Rabbit Show

Saturday, January 21

- 7 a.m. All steers must be in place and weighed in
- 8 a.m. Goat show begins
- Lamb Show following the Goat Show
- 11 a.m. Steer Show begins
- 1 p.m. Market Swine Show

Sunday, January 22

- 1 p.m. Cleanup of WT Horse Center

Monday, January 23

- 6 p.m. Begin serving Buyers' Meal
- 7 p.m. Awards and Sale

Randall County Stock Show Sale Committee Meeting

When: 7 p.m. Tuesday, December 6th

Where: Kuhlman Extension Center

Parents and livestock exhibitors are encouraged to become involved with the show and sale.

There's a committee to fit everyone. Why don't you volunteer to help make this year's show and sale the best ever!

Randall County Stock Show Sale Boosters Meeting

When: 7 p.m. Sunday, December 4th

Where: Kuhlman Extension Center

Greg Curry encourages EVERYONE to attend as help is needed in contacting potential contributors and buyers for the 2012 Randall County Stock Show Sale. Please make plans to attend.



Stock Show Concession Stand!!

Sonya Schilling has graciously volunteered to manage the Concession Stand this year, but we need each club to choose a shift for their club to work. Please call Sue at 468-5544 to let her know what shift your club has chosen and a club leader who will be in charge. If you have any questions call Sonya at 683-8415.

Club Work Shifts:

Friday	2:45-5:45	_____
	5:45-close	_____
Saturday	6-10 a.m.	_____
	10-2 p.m.	_____
	2-6 p.m.	_____
	6-close	_____



R. W. "Digger" Howard 4-H Livestock Barn Feeding Facility Pen Request Requirements

Many of you may still not be aware of our phenomenal feeding facility which is available to all Randall County 4-H Youth. The Digger Howard 4-H Barn is located on South Georgia directly behind the Randall County Jail. Two livestock feeding barns are equipped with 12-8x8 indoor pens with 16-foot runs and automatic stainless steel heated waterers. Additionally, each pen has its own feed room. All pens are designed for small animal projects (lambs, goats or swine.) To reserve your pen(s) it's simple, just come by the Extension office and complete the pen contract agreement form. A \$100 pen rent fee will be required with \$50 being reimbursed to you after we verify that your pen has been cleaned up. Remember its available for all Randall County 4-Hers.

RCJLS Sale Give-Away

Starting at validation, youth will be receiving Give-Away tickets which they can sell to help raise money for the Randall County Stock Show Sale. A portion of the proceeds from the tickets you sell will be added to the check for your animal. Contact Norissa Aguirre, 206-1494, or Gary Vogel, 655-7645, for tickets and information.



The Livestock Lowdown

County Stock Show

Entry deadline - December 15th

Lamb & Goat Showmanship Clinic

When: 2 p.m., Sunday, December 11th

Where: Digger Howard Livestock Building

Bring your own lamb or goat. Mr. Klose and Kelby Cowley will be conducting lamb and goat clinics. If you have any questions, contact Shandra Strickland, 290-0083.

LAMB AND GOAT SHOWS

WHEELER COUNTY WARM-UP

When: Saturday, December 3rd

Where: Wheeler County Show Barn in Wheeler, TX

Entry Forms: www.wheeler-tx.tamu.edu

FORT ELLIOTT BOOSTER

When: Saturday, December 3rd

Where: Fort Elliott Ag Center in Briscoe, TX

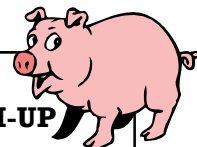
(For more information on these two shows, contact Kevin Meek 806-662-4372, or Kevin.meek@region16.net or Justin James, 806-826-5534, justin.james@region16.net)

Swine Showmanship & Show Prep Clinic

When: 2-4 p.m. Sunday, December 4th

Where: Digger Howard Livestock Barn

You don't have to, but you are welcome to bring your own pig. Contact J. D., 463-0245, if you have any questions.



SWINE SHOWS

WHEELER COUNTY WARM-UP

When: Saturday, December 10th

Where: Wheeler County Show Barn in Wheeler, TX

Entry forms: www.wheeler-tx.tamu.edu

FORT ELLIOTT BOOSTER

When: Sunday, December 11th

Where: Fort Elliott Ag Center in Briscoe, TX

(For more information on these two shows, contact Kevin Meek 806-662-4372, or Kevin.meek@region16.net or Justin James, 806-826-5534, justin.james@region16.net)

Stock Show Dates

Top of Texas: Jan 7-8

San Antonio: Feb 9-26

Odessa: Jan 5-14

San Angelo: Feb 16-26

Randall County: Jan 20-23

Houston: Feb 28-Mar 18

Ft Worth: Jan 13-Feb 4

Star of TX: Mar 9-24

D1 4-H Beef Project Family Training Series



Session 1—April 21

Beef Project Selection and Tour

Kris Black Hereford Ranch, Crawford, OK

Chartered bus will depart from Amarillo at 8a.m.

Session 2—June 2

Beef project daily care, facility tour and showmanship instructions and contests

Wellington Fairgrounds

Bring your own personal steer or heifer

Session 3—October 29

Beef project fitting and showmanship

Moore County Community Building in Dumas

Bring your own personal steer or heifer

A one time cost (lunch provided) per 4-H youth participating is \$75 and \$50 for adults. For more information, contact J. D. at 468-5543, or 463-0245.

“Steak Out” Update

Texas AgriLife Extension, Randall County, is happy to report that at the 2011 Steak Out we raised more than \$23,200; up almost \$9,000 from last year! That makes this the most successful Steak Out Randall County has ever seen. Members sold 260 tickets, up from 200 last year. This would not have been possible without the hard work of our 4-H members and the support of the following people: Gary Vogel, Shandra Strickland, Justin Miller, Lee & Karen Bartley, Michelle Robinson, Mary Mask, Ty & Robyn Cranmer, Cindy Bain, John & Elise Meador and Danny & Nicole Hicks.

Stock Show Calf Scramble Information

Fort Worth—fwssr.com

Houston—hlsr.com till Dec. 1st



Club News



T Anchor 4-H Club

When: 6:30-8:30 p.m. Monday, December 12th
Where: Skate Plex
Cost: \$7 per skater
Food: Pizza & Drinks (Bring snacks or desserts)
Community Service: Baggies of baked goods for a charity to be announced
Leader: Sheri Artho, 353-0056 or 220-9557, or slartho@hotmail.com

Livestock Project Club

When: 2-4 p.m. Sunday, December 11th
Where: Digger Howard Livestock Barn
Program: Attend the sheep and goat clinic
 This club is in need of a new club manager and assistant manager. Richard has done a great job, but is no longer able to lead the club due to personal as well as work related conflicts. This is one of Randall County's largest 4-H clubs with current membership of 89 strong. So, you can see the importance of maintaining leadership support for this club. If anyone is willing to serve, contact J. D at the Extension Office and he will provide you with details.

Cowboy 4-H Club

Contact Tricia Odom, 764-3560, or triciaodom@sbcglobal.net for information.

Palo Duro 4-H Club

No club meeting this month
 Members are encouraged to attend District Roundup Saturday December 3rd at WTAMU.
Leaders: Laura & Bryan Smith, 655-5420, or bryanlaurasmith@aol.com

Sundown 4-H Club

When: 6:30 p.m. Thursday, December 8th
Where: Canyon Wal Mart by the Angel Tree
Program: We'll be shopping for kids from the Angel Tree. Bring some money to buy hot chocolate afterwards.
Leaders: Gary & LeAnne Vogel at 655-7645 or gltjv9011gltjv@aol.com

South Amarillo 4-H Club

When: 6:30 p.m. Monday, December 12th
Where: Digger Howard Livestock Building
Leader: Norissa Aguirre, 206-1494, or fgaguir@aol.com for information.



Project & Clover Kid News



Rifle Project

Leaders: Scott (351-2385) or Kathryn (382-6105) Karcher or boergoatlady@gmail.com.

Shotgun Project

Leader: Greg Curry, 655-0561, or gdcurry@amaonline.com

Photography

Leader: Cathy McCarty, 282-8176, or jimorcathy@suddenlink.net

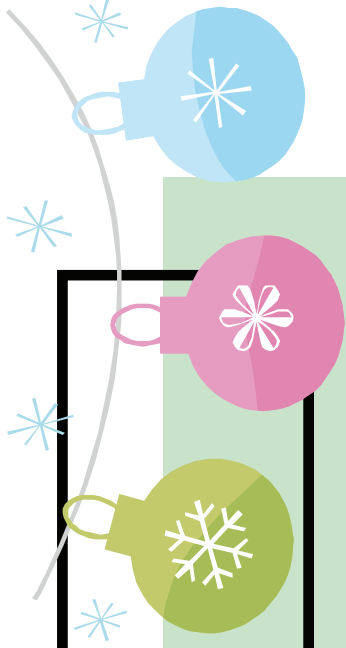
T-Anchor Pony Express Clover Kids

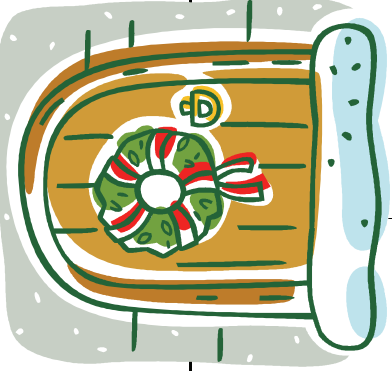


See T-Anchor club meeting plans.
Leader: Melisa Compos, 488-2326

Rabbit Project

Leaders: Lynne McCright, 282-3627, or lynne@famcampserv.com & Kathryn Karcher, 382-6105

December 2011



Sun	Mon	Tue	Wed	Thu	Fri	Sat
				1	2	District Roundup; District Gold Star 3
County Stock Show Sale Boosters Meeting, 7 p.m.; 4 Swine Showmanship & Show Prep Clinic, 2 p.m.	5	Horse Judging, 4:30 pm; Stock Show Sale Committee Meeting, 7 p.m.		8	9	<i>District 1</i> 4-H Dance 10 
Lamb & Goat Showmanship Clinic, 2p.m.	12	Horse Judging, 4:30 pm	14	Randall County Junior Livestock Assoc Scholarships due; 15 Deadline to register for County Stock Show	16	17
18	19	Deadline to email Newsletter information to Extension Office 20 Horse Judging, 4:30 pm	21	22	-Christmas Holiday- County Offices Closed	24
 25	-Christmas Holiday- County Offices Closed	Horse Judging, 4:30 pm	28	29	30	31

Texas AgriLife Extension Service

Randall County 4-H

Herbert F & Jeannie Kuhlman Extension Center
200 N Brown Rd
Canyon, TX 79015

Return service requested

Phone: 806-468-5543
Fax: 806-468-5547
E-mail: randall-tx@tamu.edu

"To Make the Best Better"

Check us out on the web!

<http://randall.agrilife.org/>



FROM EXTENSION

Leesa Wood Calvi

Leesa Wood Calvi,
County Extension Agent-
Family & Consumer Science

Kim Peters

Kim Peters
County Extension Agent-
4-H Youth Development

J. D. Ragland

J.D. Ragland
County Extension Agent-
Agriculture

Educational programs of Texas AgriLife Extension Service are open to all people without regard to race, color, sex, disability, religion, age, or national origin.

The Texas A&M University System, U.S. Department of Agriculture, and the County Commissioners Courts of Texas Cooperating.

Information contained in this letter is for educational purposes only. Reference to commercial products or trade names is made with the understanding that no discrimination is intended and no endorsement by the Texas A&M AgriLife Extension Service of the Texas A&M University System is implied.