

# Randall County 4-H Newsletter

## Extension Office Staff

Kim Peters  
CEA—4-H Youth Dev  
kgpeters@ag.tamu.edu

Leesa Wood Calvi  
CEA—FCS  
l-calvi@tamu.edu

J.D. Ragland  
CEA—Agriculture  
j-ragland@ag.tamu.edu

Shannon Walsh  
Urban Program Director  
snwalsh@ag.tamu.edu



Extension programs serve people of all ages regardless of socioeconomic level, race, color, religion, disability or national origin.

The Texas A&M System, U.S. Department of Agriculture, and County Commissioners Courts of Texas Cooperating.



## Scholarships (For graduating seniors)

### 2012 Texas 4-H Opportunity Scholarship

Completed Applications are due to the  
Extension Office by **February 6, 2012**

Scholarship applications, instructions and an online training module are **now available at the Texas 4-H and Youth Development website at <http://texas4-h.tamu.edu> (youth->scholarships)**. If you would like a County Extension Agent to review your application, call the Extension Office. Interested graduating seniors should also:

- Ensure you have taken the SAT or ACT. Minimum requirements on scores are 1350 on SAT and 19 on ACT.
- Begin working on your Free Application for Federal Aid (FAFSA). This is a free application and can be found at [fafsa.gov](http://fafsa.gov).

### Texas Cattle Women Scholarships

Applications are due **January 16th** and can be found at <http://www.txcattlewomen.org/programsactivities.html>

### Jo Baker Scholarship

Contact Opportunity Plan for more information.

### TEEA Scholarships

Applications due to Extension by **February 15th**.

State applications postmarked by **March 1st**

TEEA scholarship information can be found at <http://teea.tamu.edu/manual/chapter12.pdf>



## Adult Leaders Meeting

**When: 6:30 p.m. Tuesday, January 31st**

**Where: Kuhlman Extension Center**

We will review the results of the fund raiser and finalize the budget. All parents and leaders are welcome and encouraged to attend.



## County Council Meeting

**When: 6:30 Tuesday, February 7th**



## District Roundup & Horse Quiz Bowl

### Share-the Fun Vocal

Tavianna Williams	1st	Junior
Katie Rust	3rd	Junior
Rachel Smith	2nd	Senior

### Open Class

Molly McCrary & Macey Thurman	1st	Junior
Benjamin McCrary	2nd	Junior
Sheridan Artho, Sarah McCarty & Taylor Williams	1st	Senior

### Public Speaking

Jordan Vogel	2nd	Senior
--------------	-----	--------

### Junior Horse Quiz Bowl—Also competed

Adelia Campos	Karena Kett
Camarina Campos	Ruby Wilkerson

### National 4-H Roundup Bound

We have two Randall 4-H members advancing to the Nation 4-H Roundup in Denver, Colorado this January. They are **Kellie Baxter and Sheridan Artho**. They will be the only team representing the state of Texas in Horse method demonstration. Good job and good luck, girls!

### VERY IMPORTANT!!

(We can't stress this enough)

#### Watch Your Family's E-mail Address

We will be emailing the 4-H newsletter and communicating important 4-H information to your family's e-mail address with "Randall 4-H" in the subject line in place of sending you a letter. Many of these will come from Sue because organizational policy does not allow us to use the Randall County box for outgoing mail. You don't want to miss receiving your newsletter, information on contest registrations or deadline reminders.

### Operation Bit of Home

Donate new and used DVDs and help the morale, welfare and relaxation of our military men and women serving overseas. Please mail DVDs to either of the following addresses:

OPERATION: A Bit of Home  
Attn: Ken Meyer  
324 N 10th St, Unit B  
Nolanville, TX 76559

Or

*Bell County Extension Office*  
*1605 N Main, Rm 102*  
*Belton, TX 76513*

Please include 75 cents per disk to help with shipping costs.

**We apologize if we've failed to recognize any of your 4-H accomplishments. Contact the Extension Office, and we'll be glad to mention them in next month's newsletter.**

### Attention: Club and Project Leaders

If you have something you would like placed in the 4-H newsletter, please e-mail the Extension Office at [Randall-tx@tamu.edu](mailto:Randall-tx@tamu.edu) by the 20th of each month or the following Monday if the 20th is on the weekend.



### "Smitten by Mittens, Love for Gloves" Campaign

The Randall County 4-H Council has officially launched the county wide Community Service Project "Smitten for Mittens, Love for Gloves" campaign. 4-Hers and families are asked to donate gently used or new mittens and/or gloves of all sizes. All donated items will be divided into two groups and donated to two charitable groups selected by the 4-H County Council. Simply drop your donated items by the Extension office any time and help us keep all hands warm during this upcoming winter season. Remember its "Smitten for Mittens, Love for Gloves". The campaign ends December 10th.

### District Fashion Show Stage Design Contest

For details on this contest go to the state Fashion Show website  
<http://fcs.tamu.edu/clothing/4h/packet/index.php>  
 We'll give you the entry deadline for district when it becomes available to us.

### Frocks and Togs Fit for Kids

**When: Beginning November 19th**

**Where: Panhandle Plains Historical  
 Museum Textile Gallery**

Frocks and Togs: Children's Textiles is an exhibit of baby, toddler and young children's clothes as well as shoes, hats and capes from the first half of the past century. This would be an exceptional exhibit to visit and include on your fashion show entry form. The exhibit will be open till November 30, 2012.

### 4-H Clothing Project Meetings

When: 4-6 p.m. Mondays,  
 January 9, 16, 23, and 30  
 February 6, 13 (4-5 p.m.) and 27  
 March 5 & 26



Beginning sewers can go to our county website <http://randall.agrilife.org/> under Forms to find a list of sewing supplies you will need before your first class. You may bring your own sewing machine if you want, but the County Extension Office has several sewing machines and sergers for your use.

The County Fashion Show will be in April 2nd. Forms and more information about the Clothing & Textile project are available at <http://fcs.tamu.edu/clothing/4h/packet/index.php>

### 4-H Quilt Challenge



The challenge is limited to the first 75 person/groups who return the challenge request form. Completed quilts can be mailed or hand delivered during State Roundup. Forms and more information about the project are available at <http://fcs.tamu.edu/clothing/4h/packet/index.php>

### 4-H Fashion Storyboard

For more information about this project go to <http://fcs.tamu.edu/clothing/4h/packet/index.php>

### 4-H Clothing & Textiles Advisory Board

Applications are due June 1, 2012 and are available at <http://fcs.tamu.edu/clothing/4h/packet/index.php>

### State Roundup 2012

**June 11-15**

Several changes have been made to State Roundup 2012. This year it will be held on the Texas Tech University campus in Lubbock. In addition to the new location, numerous contest changes are also taking place. For a complete list of these changes, go to the Texas 4-H Roundup website at <http://texas4-h.tamu.edu/youth/roundup/index.php>

### 4-H Healthy Lifestyles Invitational

This contest is held during State Roundup and is a ONE TIME opportunity for intermediate youth to participate at State Roundup. Call Leesa or email her at [l-calvi@tamu.edu](mailto:l-calvi@tamu.edu) if you are interested. For information go to [http://texas4-h.tamu.edu/projects/healthy\\_lifestyles/index.php](http://texas4-h.tamu.edu/projects/healthy_lifestyles/index.php)

### 4-H Recipe Rally

The contest is open to Intermediates and Seniors, with the top three in each age division invited to participate in the 2012 Texas 4-H Roundup. The theme for the contest is "Summer Snacks" More information is available at [http://texas4-h.tamu.edu/projects/healthy\\_lifestyles/index\\_healthy\\_lifestyles.php](http://texas4-h.tamu.edu/projects/healthy_lifestyles/index_healthy_lifestyles.php)



### Consumer Decision Making

When: 5:30 p.m. Monday, January 16th

Where: Kuhlman Extension Center

If you're interested in joining a Consumer Decision Making team either come to this meeting or contact Tricia Odom at 335-5064 or [mackenzieodom@gmail.com](mailto:mackenzieodom@gmail.com).



## MASH Camp

**When:** June 27-29, 2012

**Where:** Texas A&M University in  
College Station

The camp is open to youth ages 13-17. Camp highlights include exploring careers in medicine, athletic training, safety and health through hands-on learning at the Texas A&M College of Medicine. For more information, contact Courtney Dodd at [cfdodd@ag.tamu.edu](mailto:cfdodd@ag.tamu.edu).

## 2012 4-H Conference Center Events

Jan 6-8 4-H Teen Retreat

April 23-27 Spring Fling

June 30-July 1 4-H Outdoor Challenge

July 3-6 Horizons Camp

July 9-11 Mission Possible

July 18-21 Prime Time I

July 22-25 Prime Time II

Check out the 4-H Center website [texas4hcenter.tamu.edu](http://texas4hcenter.tamu.edu) for registration information.



## Upcoming Dog Shows

**Hood County-January 28th.**

**Montgomery County-February 4th**

Entries for both these shows are due January 21st. Information for these shows and the State 4-H Dog Show are at [http://texas4h.tamu.edu/projects/dogshow/index\\_youth\\_dogshow.php](http://texas4h.tamu.edu/projects/dogshow/index_youth_dogshow.php)

## 4-H Wildlife Habitat

### Education Program (WHEP)

**When:** June 16-17, 2012

**Where:** Sul Ross State University, Alpine, TX

This is an interactive program that teaches youth about wildlife, habitat, habitat management, and natural resources stewardship. For more information go to [http://texas4h.tamu.edu/projects/natural\\_resources](http://texas4h.tamu.edu/projects/natural_resources).

## New 2011-2012 4-H Recordkeeping System

Parts of the report form will be standardized to allow for ease of completion and judging.

- Much of the data from previous record books that a member may have saved on their home computers may be "cut and pasted" into the new forms
- All 4-H members will use the new online forms or new paper forms that will be available for download from the Texas 4-H website beginning in the 2011-2012 4-H Year.
- Record books will still be printed and turned in (in hardcopy form)

If you have any questions, please contact Derrick Bruton at [d-bruton@tamu.edu](mailto:d-bruton@tamu.edu) or Jodi McManus at [j-mcmanus@tamu.edu](mailto:j-mcmanus@tamu.edu).

**County training is planned for May 31st.** Call Kim Peters if you want to attend or have any questions.



## Entomology

Are you interested in bugs? Contact Jeanice Kett at 282-4240 to find out how you can learn about them and compete in the Ento ID contest this spring.

## 2012 Texas 4-H Senior Photography Contest



This year's theme category is "Trains" (both real and model). Photos must be either of the engine or a train car. Entries will be done through 4-H Connect from April 1, 2012 to April 15, 2012.

The rules and guidelines are posted on the Texas 4-H and Youth Development Website at [http://texas4h.tamu.edu/youth/photography/index\\_youth\\_photography.php](http://texas4h.tamu.edu/youth/photography/index_youth_photography.php).

## Texas 4-H Beekeeping Essay Contest

**Entry Deadline: January 13, 2012**

The topic for this year's essay is "The Results of Honey Bee Pollination in My Community". Note: For 2012, only essays submitted electronically will be accepted. For more information, go to the state 4-H website.



# Shooting Sports

## Rifle Project Practices

**When: Monday, January 9th at 6p.m.-new shooters (parents encouraged to attend) and 6:45-returning shooters**

**Where: Amarillo Rifle and Pistol Club (www.amarillorpc.com)**

Each Monday after that, we will be practicing at 6p.m. Cost is \$2 range fee per shooter. Ammo is available for \$2.50 per box of 50. If you bring your own ammo, it must be 40 grain, lead tip only (no jackets) and muzzle velocity of 1250 ft/sec or less. Rifles and other equipment will be provided by the club. You will need to bring your own eye protection. Ear plugs are available for purchase if you don't bring your own. Contact Scott, 351-2385, or Kathryn, 382-6105, with any questions. You may also email boergoatlady@gmail.com.

Keep an eye on the website, [http://texas4-H.tamu.edu/youth/natural\\_resources/index\\_natural\\_resources.php](http://texas4-H.tamu.edu/youth/natural_resources/index_natural_resources.php) to find out about a host of shooting sports projects changes which will be unveiled very soon.

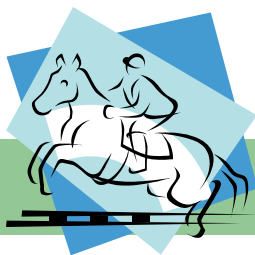
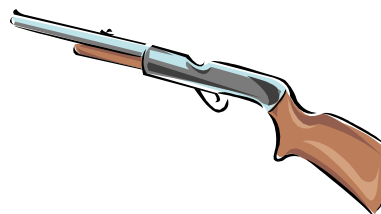
## Headquarters Coach Training

**When: January 21-22**

**Where: College Station**



Registration must be made on 4-H Connect by January 6th.



# Horse Happenings

## Horse Judging

**When: 4:30 p.m. each Tuesday**  
**Where: Pluhars' (unless told differently)**  
Call Darwin, 679-3540, for information.



## Big 5 Meeting

**When: 6:30 p.m. Monday, January 30th**  
**Where: Canyon Happy State Bank**

Big 5 meetings usually take place at 6:30 p.m. the last Monday of the month. Everyone is welcome to attend.

## Summer Horsemanship School

For more information, go to <http://agriliferegister.tamu.edu/> and click on Events. Then scroll down the page close to the bottom and find 40th Annual Texas AgriLife Extension Summer Horsemanship School Program. If you have any questions, call Teri Antilley 979-845-5264 or email [tjantilley@ag.tamu.edu](mailto:tjantilley@ag.tamu.edu).

## Summer Horsemanship Clinic

**When: May-June 2012**

For more information go to <http://animalscience.tamu.edu/academics/equine/summer-horsemanship/hosting/index.htm>

# The Livestock Lowdown

## RANDALL COUNTY JUNIOR LIVESTOCK

### SHOW SCHEDULE

#### Friday, January 20

- 3-6 p.m. Weigh in of all species
- 5 p.m. Begin Heifer Show  
Begin Breeding Gilt Show following the Heifers
- 5:30 p.m. Rabbits must be in place
- 7:00 p.m. Begin Rabbit Show

#### Saturday, January 21

- 7 a.m. All steers must be in place and weighed in
- 8 a.m. Goat show begins  
Lamb Show following the Goat Show
- 11 a.m. Steer Show begins
- 1 p.m. Market Swine Show

#### Sunday, January 22

- 1 p.m. Cleanup of WT Horse Center

#### Monday, January 23

- 6 p.m. Begin serving Buyers' Meal
- 7 p.m. Awards and Sale



## RCJLS Association Meeting

**When: 6:30 p.m. Tuesday, January 3rd**

**Where: Kuhlman Extension Center**

We'll be finalizing all logistics regarding show entries, set up, tear down, etc. We need everyone's help, so please make plans to attend.

## Stock Show Tear-Down Plans

**When: Approx 1 p.m. Sunday, January 22nd**

**Where: WTAMU Horse Center**

Attendance will be taken. If we all help, it won't take long.

**Livestock Project Blue Form**-If you plan on showing at one of the 2012 stock shows, please fill out the 2012 Stock Shows Livestock Project Form available at the Extension Office or on our web site [Randall-tx.tamu.edu](http://Randall-tx.tamu.edu) under Forms. As soon as you know your intentions, let's get one filled out

## Stock Show Concession Stand!!

If you would like to volunteer to work at the concession stand, call your club's concession stand leader listed below.

### Club Work Shifts:

<b>Friday</b>	2:45-5:45	<u>Livestock</u>
	5:45-close	<u>Sundown</u> -LeAnne Vogel
<b>Saturday</b>	6-10 a.m.	<u>Palo Duro</u> -Brian Smith
	10-2 p.m.	<u>S. Amarillo</u> -Norissa Aguirre
	2-6 p.m.	<u>Cowboy</u> -Tricia Odom
	6-close	<u>T-Anchor</u> -Sheri Artho

If you have any questions call Sonya Schilling at 683-8415.

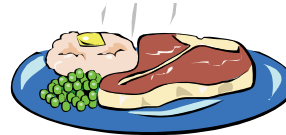
## Clipping & Washing Schedules

If you would like to use the J. O. Parker Building to get your livestock project ready for competition, contact the Extension Office to reserve a time. We want everyone to have time to prepare their animals.



## RCJLS Sale Give-Away

Want to sell tickets to help raise money for the Randall County Stock Show Sale? A portion of the proceeds from the tickets you sell will be added to the check for your animal. Contact Norissa Aguirre, 206-1494, or Gary Vogel, 655-7645, for tickets and more information.



## RCJLS Sale Meal Tickets

As you know, buyers get complimentary tickets to the steak dinner prior to the sale at 6 p.m. Monday, January 23rd. **Exhibitors and parents can eat at this event for \$10/plate beginning at 6:30 p.m. after the buyers have been served. If you plan on eating, please buy tickets for your family from any RCJLS Board member or from J. D. before the sale so that we can have an accurate meal count.**

# The Livestock Lowdown

## Ft Worth/San Antonio Stock Shows Travel Meeting

**When:** Approx 4 p.m. Sunday, Jan 22nd

**Where:** WT Horse Center Grand Stands



This year's travel meeting will take place after the stock show clean up. At least 1 member per family must attend for all exhibitors planning to attend and exhibit at either the Ft Worth or San Antonio Stock Shows. This is a very important meeting at which livestock travel plans for our county group must be made. **MARK YOUR CALENDAR!!**

### Top O' Texas Jr Livestock Show

**When:** January 7 & 8

**Where:** Pampa

This is an excellent opportunity to exhibit your livestock prior to the upcoming County Show. However, be wise about attending: don't clip anything, wash in warm water and make sure your animal is dry before exposing them to the cold to avoid sickness and finally, if the weather is bad, don't go. Let J. D. know if he can help you in any way.

### Texas Veterinary Science Skillathon

**When:** June 14th

**Where:** State Roundup in Lubbock, TX

**Application Postmark Deadline:** March 16th

For more information go to <http://texas4->

### D1 4-H Beef Project Family Training Series



Session 1—April 21

Beef Project Selection and Tour  
Kris Black Hereford Ranch, Crawford, OK  
Chartered bus will depart from Amarillo at 8a.m.

Session 2—June 2

Beef project daily care, facility tour and showmanship instructions and contests  
Wellington Fairgrounds

Bring your own personal steer or heifer

Session 3—October 29

Beef project fitting and showmanship  
Moore County Community Building in Dumas. Bring your own personal steer or heifer

A one time cost (lunch provided) per 4-H youth participating is \$75 and \$50 for adults. For more information, contact J. D. at 468-5543, or 463-0245.

### R. W. "Digger" Howard 4-H Livestock Barn Feeding Facility Pen Request Requirements

Many of you may still not be aware of our phenomenal feeding facility which is available to all Randall County 4-H Youth. The Digger Howard 4-H Barn is located on South Georgia directly behind the Randall County Jail. Two livestock feeding barns are equipped with 12-8x8 indoor pens with 16-foot runs and automatic stainless steel heated waterers. Additionally, each pen has its own feed room. All pens are designed for small animal projects (lambs, goats or swine.) To reserve your pen(s) it's simple, just come by the Extension office and complete the pen contract agreement form. A \$100 pen rent fee will be required with \$50 being reimbursed to you after we verify that your pen has been cleaned up. Remember its available for all Randall County 4-Hers.

### 4-H Cash Blowout Jackpot

Swine, Goats, Lambs,  
Heifers and Steers

**When:** January 7th

**Where:** Henderson, TX



For more information contact Blaine Jernigan at 903-657-0376 or 903-404-2162

### Stock Show Dates

Top of Texas: Jan 7-8

Odessa: Jan 5-14

Randall County: Jan 20-23

Ft Worth: Jan 13-Feb 4

San Antonio: Feb 9-26

San Angelo: Feb 16-26

Houston: Feb 28-Mar 18

Star of TX: Mar 9-24

### Stock Show Calf Scramble Information

Fort Worth—fwssr.com

Houston—hlsr.com till Dec. 1st



## Club News



### T Anchor 4-H Club

**When:** 6:30-8:30 p.m. Monday, January 9th  
**Where:** Kuhlman Extension Center  
**Food:** POT LUCK (Bring your favorite casserole or crockpot meal.)  
**Community Service:** Ronald McDonald House on January 24th. (Please contact Logan Pluhar for details.)  
**Recreation:** TBA  
 Leader: Sheri Artho, 353-0056 or 220-9557, or slartho@hotmail.com  
 PLEASE CHECK YOU EMAILS DAILY. THIS WILL BE OUR CLUB'S WAY OF SENDING INFORMATION AND UPDATES.

### Livestock Project Club

**Meeting Plans will be emailed to members.**

**Welcome to Larry Root, our new club manager.**

A meeting with club officers will take place soon, and plans will be made for the club. Keep an eye on your email for more details later.

### Palo Duro 4-H Club

**NO JANUARY MEETING**  
**NEXT MEETING WILL BE IN APRIL**  
 Leaders: Laura & Bryan Smith,  
 655-5420, or bryanlaurasmith@aol.com

### Sundown 4-H Club

**NO JANUARY MEETING**  
**NEXT MEETING WILL BE IN APRIL**  
 Leaders: Gary & LeAnne Vogel at 655-7645 or gltjv9011gltjv@aol.com

### South Amarillo 4-H Club

**When:** 6:30 p.m. Thursday, January 12th  
**Where:** Digger Howard Livestock Building  
 Leader: Contact Norissa Aguirre, 206-1494, or fgaguir@aol.com for information.

### Cowboy 4-H Club

Contact Tricia Odom, 764-3560, or triciaodom@sbcglobal.net for information.



## Project & Clover Kid News



### Rifle Project

Leaders: Scott (351-2385) or Kathryn (382-6105)  
 Karcher or boergoatlady@gmail.com.

### Shotgun Project

Leader: Greg Curry, 655-0561, or gdcurry@amaonline.com

### Photography

Leader: Cathy McCarty, 282-8176, or jimorcathy@suddenlink.net

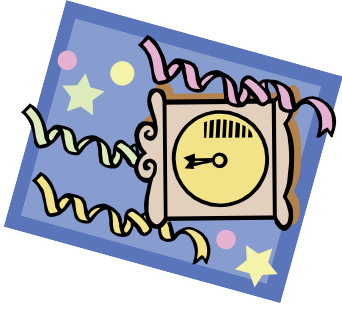
### T-Anchor Pony Express Clover Kids


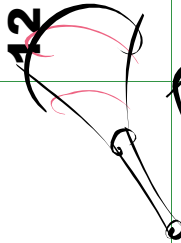
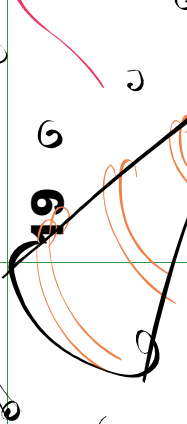

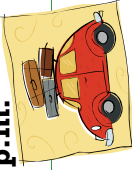


See T-Anchor club meeting plans.  
 Leader: Melisa Compos, 488-2326

### Rabbit Project

Leaders: Lynne McCright, 282-3627, or lynne@famcampserv.com & Kathryn Karcher, 382-6105

# January 2012



Sun	Mon	Tue	Wed	Thu	Fri	Sat
<b>1</b> 	<b>2</b> -New Years Holiday- County Offices Closed	<b>3</b> Horse Judging, 4:30 pm; RCJLS Assoc Meeting, 6:30 p.m.	<b>4</b>	<b>5</b>	<b>6</b>	<b>7</b> Top O' Texas Jr Livestock Show
<b>8</b> Top O' Texas Jr Livestock Show	<b>9</b> Sewing 2-4 p.m.; Beginners Rifle Practice 6 p.m. Returning shoot- ers, 6:45 p.m.	<b>10</b> Horse Judging, 4:30 pm	<b>11</b>	<b>12</b> 	<b>13</b> 4-H Beekeeping Essay Entry Deadline	<b>14</b>
<b>15</b>	<b>16</b> Sewing 2-4 p.m.; Consumer Deci- sion Making, 5:30 p.m.	<b>17</b> Horse Judging, 4:30 pm	<b>18</b>	<b>19</b> 	<b>20</b> 	<b>21</b> RANDALL COUNTY JUNIOR LIVESTOCK SHOW
<b>22</b> Stock Show Tear-Down, 1p.m.; Ft Worth/San An- tonio Travel Meet- ing, 4 p.m. 	<b>23</b> Sewing 2-4 p.m.; RCJLS Buyers Meal and Sale, 6 p.m. 	<b>24</b> Horse Judging, 4:30 pm	<b>25</b>	<b>26</b> 	<b>27</b>	<b>28</b>
<b>29</b>	<b>30</b> 2-4 p.m.; Big 5 Meeting, 6:30 p..	<b>31</b> Horse Judging, 4:30 pm				

## Texas AgriLife Extension Service

### Randall County 4-H

Herbert F & Jeannie Kuhlman Extension Center  
200 N Brown Rd  
Canyon, TX 79015

#### Return service requested

Phone: 806-468-5543  
Fax: 806-468-5547  
E-mail: randall-tx@tamu.edu

"To Make the Best Better"

Check us out on the web!

<http://randall.agrilife.org/>



## FROM EXTENSION

*Leesa Wood Calvi*

Leesa Wood Calvi,  
County Extension Agent-  
Family & Consumer Science

*Kim Peters*

Kim Peters  
County Extension Agent-  
4-H Youth Development

*J. D. Ragland*

J.D. Ragland  
County Extension Agent-  
Agriculture

Educational programs of Texas AgriLife Extension Service are open to all people without regard to race, color, sex, disability, religion, age, or national origin.

The Texas A&M University System, U.S. Department of Agriculture, and the County Commissioners Courts of Texas Cooperating.

Information contained in this letter is for educational purposes only. Reference to commercial products or trade names is made with the understanding that no discrimination is intended and no endorsement by the Texas A&M AgriLife Extension Service of the Texas A&M University System is implied.