

Randall County 4-H Newsletter

Extension Office Staff

Kim Peters
CEA—4-H Youth Dev
kgpeters@ag.tamu.edu

Leesa Wood Calvi
CEA—FCS
l-calvi@tamu.edu

J.D. Ragland
CEA—Agriculture
j-ragland@ag.tamu.edu

Shannon Walsh
Urban Program Director
snwalsh@ag.tamu.edu



Extension programs serve people of all ages regardless of socioeconomic level, race, color, religion, disability or national origin.

The Texas A&M System, U.S. Department of Agriculture, and County Commissioners Courts of Texas Cooperating.



Scholarships

(For graduating seniors)

2012 Texas 4-H Opportunity Scholarship

Completed Applications are due to the
Extension Office by **5 p.m. February 6, 2012**

Scholarship applications, instructions and an online training module are **now available at the Texas 4-H and Youth Development website at <http://texas4-h.tamu.edu> (youth->scholarships)**. Interested graduating seniors should also:

- Ensure you have taken the SAT or ACT. Minimum requirements on scores are 1350 on SAT and 19 on ACT.
- Begin working on your Free Application for Federal Aid (FAFSA). This is a free application and can be found at fafsa.gov.

Jo Baker Scholarship

Contact Opportunity Plan for more information.

Robert Devin Ag Scholarship

If you have applied for acceptance to WTAMU by Feb. 1st, are a Randall 4-H member (remember to put this fact on your application) and majoring in Ag, the WTAMU Ag Scholarship Committee will consider you for this scholarship. Call Bob Robinson, 651-2558, if you have any questions.

TEEA Scholarships

Applications due to Extension by February 15th.

State applications postmarked by March 1st

TEEA scholarship information can be found at <http://teea.tamu.edu/manual/chapter12.pdf>

Edith Lois Wilson 4-H Scholarship

Deadline for entry is February 10th

Contact the Amarillo Area Foundation for more information at <http://www.amarilloareafoundation.org/page.aspx?pid=346>

Daisy Shooting Sports 4-H Scholarship

Applications are due by May 15. For more information go to http://www.co4hshooting.org/2011_daisy_scholarship_application.pdf





Johnson County Horse Judging

Randall's Senior Horse Judging team placed first at this year's competition. Team members were **Logan Pluhar, Sparklynn Rust, Casey Rust, Chaylee Gilmore and Lauren Moore.**

Placing 15th in reasons was Intermediate **Emily McMichael.** Also competing were **Melissa Harvell, Savannah Graves and Katie Rust.** Congratulations to all of you!

We apologize if we've failed to recognize any of your 4-H accomplishments. Contact the Extension Office, and we'll be glad to mention them in next month's newsletter.

National 4-H Roundup

Kellie Baxter and Sheridan Artho placed first at National 4-H Roundup. They were the only team representing the state of Texas in Horse method demonstration. Good job girls!

District Swine Skillathon

Randall's Senior team of **Coleman Curry, Colton Meyer, Quay Owen and Makayla Reynolds** placed second at this year's district competition. High Individuals were **Coleman Curry- 2nd, Quay Owen-3rd and Colton Meyer-5th.** Way to go guys!

County Jr Livestock Show

Grand Champions

Rhett Bain	Steer
Quay Owen	Lamb
Tyler Mogford	Goat
Jace Owen	Swine
Benjamin McCrary	Rabbit
Reserve Grand Champions	
Rayleigh Bain	Steer
Brynn Owen	Lamb
McKenzie Hicks	Swine
Sheridan Artho	Rabbit

Showmanship

Sheridan Artho	1st	Sr Rabbit
Madison Wewel	1st	Jr Rabbit
Tyler Mogford	1st	Sr Goat
Coleman Curry	2nd	Sr Goat
Cheraye Aguirre	3rd	Sr Goat
Macey Thurman	1st	Jr Goat
Haley Thurman	2nd	Jr Goat
Brett Cobb	3rd	Jr Goat
Tyler Mogford	1st	Sr Lamb
Bretton Strickland	2nd	Sr Lamb
Kellie Baxter	3rd	Sr Lamb
Alisa Talley	1st	Jr Lamb

Sadie Bow	2nd	Jr Lamb
Jace Owens	3rd	Jr Lamb
Owen Carver	1st	Sr Steer
Rhett Bain	2nd	Sr Steer
Tyler Nelson	3rd	Sr Steer
Lexi Bain	1st	Jr Steer
Rayleigh Bain	2nd	Jr Steer
Kellie Baxter	1st	Sr Swine
Ashleigh Smith	2nd	Sr Swine
MaKalah Robinson	3rd	Sr Swine
Kaleigh Meador	1st	Jr Swine
MaKayla Reynolds	2nd	Jr Swine
Hayden Willeford	3rd	Jr Swine

Operation Bit of Home

Donate new and used DVDs and help the morale, welfare and relaxation of our military men and women serving overseas. Please mail DVDs to either of the following addresses:

OPERATION: A Bit of Home
Attn: Ken Meyer
324 N 10th St, Unit B
Nolanville, TX 76559

Or

Bell County Extension Office
1605 N Main, Rm 102
Belton, TX 76513

Please include 75 cents per disk to help with shipping costs.

VERY IMPORTANT!!

(We can't stress this enough)

Watch Your Family's E-mail Address

We will be emailing the 4-H newsletter and communicating important 4-H information to your family's e-mail address with "**Randall 4-H**" in the **subject line** in place of sending you a letter. Many of these will come from Sue because organizational policy does not allow us to use the Randall County box for outgoing mail. **You don't want to miss receiving your newsletter, information on contest registrations or deadline reminders.**

County Council Officer Elections

Officer elections will be held at the April Council meeting. If you would like to run for County Council Officer, complete the form below and return it to the Extension by the deadline.



2012-2013 Randall County 4-H Council Officer Information Sheet

Congratulations on taking the first step in becoming a Randall County 4-H Council Officer. It is a rewarding position, but in order to achieve election night success there are a few simple pre-election guidelines. The following offices are available for election and must be held by 4-H members who are at least 14 years old:

- President
- Vice President
- Secretary
- Reporter
- Rec Leader
- District Delegate

Please fill out the following form and return it to the extension office, by fax or in person letting us know your intentions for running for Council Office by **February 24th**.

Name: _____ Age: _____ Years in 4-H: _____

Club: _____

Office Interested in holding: (Please Check all that apply.)

- President Vice President Secretary Reporter
- Rec Leader District Delegate

Club Offices Held: _____

One to two sentences that describes why you want to be a County Council Officer:



Consumer Decision Making

When: 5:30 p.m. Thursdays

Where: Kuhlman Extension Center

We still need 2 seniors, 1 intermediate and 2 more juniors to have full teams. Come to the meetings or contact Tricia Odom at 335-5064 or mackenzieodom@gmail.com if you're interested. District Competition is Thursday, May 3rd.

State Roundup 2012 June 11-15

Several changes have been made to State Roundup 2012. This year it will be held on the Texas Tech University campus in Lubbock. In addition to the new location, numerous contest changes are also taking place. For a complete list of these changes, go to the Texas 4-H Roundup website at <http://texas4-h.tamu.edu/youth/roundup/index.php>

4-H Healthy Lifestyles Invitational

This contest is held during State Roundup and is a ONE TIME opportunity for intermediate youth to participate at State Roundup. Call Leesa or email her at l-calvi@tamu.edu if you are interested. For information go to http://texas4-h.tamu.edu/projects/healthy_lifestyles/index.php.

4-H Recipe Rally

Entry deadline is February 1st. The contest is open to Intermediates and Seniors, with the top three in each age division invited to participate in the 2012 Texas 4-H Roundup. The theme for the contest is "Summer Snacks" More information is available at http://texas4-h.tamu.edu/projects/healthy_lifestyles/index_healthy_lifestyles.php.

4-H Has Talent

Senior and Intermediate age 4-H members are allowed to participate. Deadline for submission via YouTube to Kyle Merten at the State 4-H Office at jhmerten@ag.tamu.edu is April 1st. For more information on this contest, go to the State website at <http://texas4-h.tamu.edu/roundup> then open 4-H Has Talent under 2012 Resources.

SET Poster Competition

Each Senior Division Category winner will receive a \$1,500 scholarship. For more information contact Matt Tarpley at mtarpley@ag.tamu.edu.

Randall County 4-H Newsletter



Coming Soon

to all Texas Cinemark Theaters
(Hollywood 16-9100 Canyon Dr)
DEEP IN THE HEART
February 17th

Mr Richard "Dick" Wallrath's true-life story No one has ever given more financially to the Texas 4-H and Texas FFA Scholarship programs than Dick Wallrath. The success of the opening weekend of February 17th will dictate their plan for nationwide release. Of course, the more success the movie has, the more funds are contributed. Check out this Youtube link <http://www.youtube.com/watch?v=X5oHFqfq0Xo> to see a trailer of the movie. It's going to be a good one, so make plans to attend.

2013 Texas 4-H European Trip to Scotland & Ireland

When: July 3-12, 2013

Fee is \$3,395 per youth



Youth must be 15 years of age and older. For information contact Dr. Charla Bading at c-bading@tamu.edu. To sign up go to <http://www.explorica.com/Bading-5255> and click go.

County Roundup Version 2.0

When: 4:30-6:30 p.m. Wednesday, April 11th

Where: Kuhlman Extension Center

Deadline to call Extension and let them know you wish to compete is 5 p.m. Monday, March 26th. Thirty-three spots to State 4-H Roundup in Lubbock remain and will be up for grabs at "RV2" (Roundup Version 2.0). If you have not already qualified for a Thursday event in Lubbock, this is your invitation to greatness. For a complete list of open State Roundup spots go to <http://d14-h.tamu.edu/2012/01/10/district-1-roundup-version-2-0/>. A complete slate of Educational Presentation categories and Share-the-Fun events will be conducted. If you have already qualified for State, here is your chance to tune up your presentation. If you are a junior and would like another opportunity to showcase your skills, here is your opportunity. **District Competition for "RV2" is May 7th.**

4-H Clothing Project Meetings

Feb. 6th-Restyle and paint leopard spots on a pair of old shoes with Kim. Bring shoes (cavass or leather suggested) and \$2 for paints 4-6 p.m.

Feb. 13th-Fashion Story Board with Rachel 4-5 p.m. Bring a drawing and Rachel will help you get it ready for contest. (Sewing from 4-6 p.m. if you're not interested.)

Feb. 20th-County Holiday, no class

Feb. 27th-Sewing 4-6 p.m.

Mar. 5th-Sewing 4-6 p.m.

Mar. 19th-Help with clothing records and paperwork 4-5 p.m., sewing 5-6 p.m.

Mar. 26th-Modeling with Rachel preparing for the Fashion Show. 5-6 p.m. sewing if needed

Beginning sewers can go to our county website <http://randall.agrilife.org/> under Forms to find a list of sewing supplies you will need before your first class. You may bring your own sewing machine if you want, but the County Extension Office has several sewing machines and sergers for your use. The County Fashion Show will be on April 2nd. Forms and more information about the Clothing & Textile project are available at <http://fcs.tamu.edu/clothing/4h/packet/index.php>



4-H Fashion Storyboard

For more information about this project go to <http://fcs.tamu.edu/clothing/4h/packet/index.php>

4-H Clothing & Textiles

Advisory Board

Applications are due June 1, 2012 and are available at <http://fcs.tamu.edu/clothing/4h/packet/index.php>

Frocks and Togs Fit for Kids

When: Beginning November 19th

Where: Panhandle Plains Historical Museum Textile Gallery

Frocks and Togs: Children's Textiles is an exhibit of baby, toddler and young children's clothes as well as shoes, hats and capes from the first half of the past century. This would be an exceptional exhibit to visit and include on your fashion show entry form. The exhibit will be open till November 30, 2012.

SET Camp

A SET day camp is being planned with the objective of helping 4-H members develop recognition of opportunities and competitions that allow them to showcase the knowledge and skills developed from their 4-H Science, Engineering and Technology experiences. The camp will focus on "how to" develop a Scientific Method experiment and carry it out. More information will come when a date is decided on.

Sweetheart Dinner and Dance

When: February 11th

Where: Texas 4-H Conference Center in Brownwood, TX

Cost is \$50 per person

Each ticket includes a buffet dinner and dance. Proceeds go to benefit Summer Youth Camps. You may make a donation or purchase a ticket by calling 325-784-5482. Rooms can be rented at the center for \$90 which includes a continental breakfast for two.



County Council Meeting

When: 6:30 Tuesday, February 7th

Entomology

Are you interested in bugs? Contact Jeanice Kett at 282-4240 to find out how you can learn about them and compete in the Ento ID contest this spring.

2011 Gold Star Winner Photos

Stop by the Happy State Bank lobby and see the photos of our latest Gold Star winners: Kellie Baxter, Mackenzie Odom, Brady Sayers and Sarah McCarty taken by Photography by Vondel.

MASH Camp

When: June 27-29, 2012

**Where: Texas A&M University in
College Station**

The camp is open to youth ages 13-17. Camp highlights include exploring careers in medicine, athletic training, safety and health through hands-on learning at the Texas A&M College of Medicine. For more information, contact Courtney Dodd at cfdodd@ag.tamu.edu.

2012 4-H Conference Center Events

March 10-14	Challenge Course Cert.
March	Becoming an Outdoors Woman
April 23-27	Spring Fling
June 30-July 1	4-H Outdoor Challenge
July 3-6	Horizons Camp
July 9-11	Mission Possible
July 18-21	Prime Time I
July 22-25	Prime Time II

Check out the 4-H Center website texas4hcenter.tamu.edu for registration information.



Texas 4-H Congress

When: July 15-18, 2012

Where: Austin, TX

4-H members must be 15 at the time of the event. Registration and legislative bill submission will take place May-June. For more information visit the Texas 4-H Congress online at <http://texas4-H.tamu.edu/youth/txcongress/index.php>

4-H Wildlife Habitat

Education Program (WHEP)

When: June 16-17, 2012

Where: Sul Ross State University, Alpine, TX

This is an interactive program that teaches youth about wildlife, habitat, habitat management, and natural resources stewardship. For more information go to http://texas4-H.tamu.edu/projects/natural_resources.

New 2011-2012 4-H Recordkeeping System

Parts of the report form will be standardized to allow for ease of completion and judging.

- Much of the data from previous record books that a member may have saved on their home computers may be "cut and pasted" into the new forms
- All 4-H members will use the new online forms or new paper forms that will be available for download from the Texas 4-H website beginning in the 2011-2012 4-H Year.
- Record books will still be printed and turned in (in hardcopy form)

If you have any questions, please contact Derrick Bruton at d-bruton@tamu.edu or Jodi McManus at j-mcmanus@tamu.edu.

County training is planned for May 31st. Call Kim Peters if you want to attend or have any questions.

4-H Golf Challenge

When: April 27-29

Where: College Station, TX

Registration Deadline via 4-H Connect: March 30th

Visit <http://texas4-H.tamu.edu/youth/golf/index.php> for more information.



Texas Courthouse Photo Contest

The *County Progress Magazine* is in need of photographs of four courthouses to appear on the cover of their magazine. Courthouse pictures needed are of Hunt, Hardin, Matagorda and Martin Counties. Contact the Extension Office if you're interested in submitting a picture.



2012 Texas 4-H Senior Photography Contest

This year's theme category is "Trains" (both real and model). Photos must be either of the engine or a train car. Entries will be done through 4-H Connect from April 1, 2012 to April 15, 2012. The rules and guidelines are posted on the Texas 4-H and Youth Development Website at http://texas4-H.tamu.edu/youth/photography/index_youth_photography.php.

Friends for Change Grants

Applications due Midnight February 29th

However you want to make a difference in the World, you have a chance to receive a \$1,000 scholarship. Learn more at www.YSA.org/grants/disney-friends-change-grants.

Shooting Sports



Rifle Project Practices

When: 6 p.m. each Monday

Where: Amarillo Rifle and Pistol Club
(www.amarillorpc.com)

Cost is \$2 range fee per shooter. Ammo is available for \$2.50 per box of 50. If you bring your own ammo, it must be 40 grain, lead tip only (no jackets) and muzzle velocity of 1250 ft/sec or less. Rifles and other equipment will be provided by the club. You will need to bring your own eye protection. Ear plugs are available for purchase if you don't bring your own. Contact Scott, 351-2385, or Kathryn, 382-6105, with any questions. You may also email boer-goatlady@gmail.com.

District 1 Rifle Contest

When: May 4th & 5th

Entry Deadline via 4-H Connect: April 16th

For more information go to <http://d14-h.tamu.edu/events/shooting-sports/>

Charlie Greenway Silhouette Match

When: Saturday, April 14th

Where: Baird, TX

Registration Deadline: March 24th

For more information, contact Eddie Hart, 325-668-2634 or James Rice 325-721-0041.

4-H Shooting Sports Extravaganza

When: April 21st

Where: Texas 4-H Center on Lake Brownwood

This open match is for beginning shooters requiring limited knowledge and experience. Registration opens February 13th on 4-H Connect. Registration is limited to the first 400 participants. Visit the web site http://texas4-H.tamu.edu/projects/natural_resources for more information.

Horse Happenings

Texas State Reining Clinic

When: March 26-27

Where: Glen Rose, TX

Preregistration Deadline: March 18th

For additional information, go to http://reiningintexas.com/Clinic_Registration.html



Equestrian Summer Camps

Where: Redcloud, CO

www.campredcloud.org

Big 5 Meeting

When: 6:30 p.m. Monday, February 27th

Where: Canyon Happy State Bank

Big 5 meetings usually take place at 6:30 p.m. the last Monday of the month. Everyone is welcome to attend. This year's Big 5 Horse Show rules will soon be posted on the Big 5 Website www/Big5horseshow.com.



Horse Judging

When: 4:30 p.m. each Tuesday

Where: Pluhars' (unless told differently)

Call Darwin, 679-3540, for information. District Horse Judging is April 13th and registration via 4-H Connect closes April 6th. Information is posted on the District Website <http://d14-h.tamu.edu>

Summer Horsemanship School

For more information, go to <http://agriferegister.tamu.edu/> and click on Events. Then scroll down the page close to the bottom and find 40th Annual Texas AgriLife Extension Summer Horsemanship School Program. If you have any questions, call Teri Antilley 979-845-5264 or email tjantilley@ag.tamu.edu.

Summer Horsemanship Clinic

When: May-June 2012

For more information go to <http://animalscience.tamu.edu/academics/equine/summer-horsemanship/hosting/index.htm>

The Livestock Lowdown

Howard College in Big Springs, TX

Goat Camp

When: June 3-5



Lamb Camp

When: June 10-12



Only the first 200 paid entries in each of these camps will be accepted. For more information contact Cash Berry 432-264-5110 or 432-517-0505.

Stock Show Dates

San Antonio: Feb 9-26
 San Angelo: Feb 16-26
 Houston: Feb 28-Mar 18
 Star of TX: Mar 9-24

Livestock Judging

If you're interested in participating in 4-H Livestock Judging, contact the Extension Office. The District Contest is April 20th at WTAMU and we'll be having several practices before then. For more information go to <http://d14-h.tamu.edu/events/livestock-judging/>.



Meats Judging

If you're interested in coaching or joining a meats judging team, contact the Extension Office. District Meats Judging will take place at Oklahoma Panhandle State University Meats Judging Lab on April 18th.

Attention: Club and Project Leaders

If you have something you would like placed in the 4-H newsletter, please e-mail the Extension Office at Randall-tx@tamu.edu by the 20th of each month or the following Monday if the 20th is on the weekend.

Clipping & Washing Schedules

If you would like to use the Digger Howard Livestock Building to get your livestock project ready for competition, contact the Extension Office to reserve a time. We want everyone to have time to prepare their animals.



Veterinary Science Program

Students ages 8-16 who sign up for the program will be committed to a five-year study course and apprenticeship that is career-oriented, job-trained—meaning throughout the program they will work directly toward a career in veterinary science. Those who successfully complete the study course and apprenticeship of clinical hours will receive a certificate of completion and the classification as a veterinary assistant. **If you're interested, contact Brandon Boughen at the Potter County Extension Office, 373-0713.**

District 1 Dairy Judging Contest

When: Friday, March 23rd

Where: Hinders Dairy in Canyon

Registration via 4-H Connect closes March 19th. If you would like to join a Randall team, contact the Extension Office. The top 3 senior teams will advance to state at Tarleton State University on April 19th.

The Livestock Lowdown

Thank You!

Thanks to everyone who helped set up and clean up the Horse Center before and after the County Stock Show. Without our volunteers, the show would not have been the great success it was.

Thanks also to the Sale Committee and all the volunteers who assisted on Monday night. A big thanks also to the Livestock Ambassadors who did such a great job getting the word out about the show and served as greeters, waiters and waitresses at the Sale Dinner.



Houston Stock Show Travel Meeting

When: 6:30 p.m. Monday, February 27th

Where: Kuhlman Extension Center

At least one family member must attend for all exhibitors planning to attend and exhibit at this show. This is a very important meeting at which livestock travel plans for our county group must be made. **MARK YOUR CALENDAR!!**

Texas Veterinary Science Skillathon

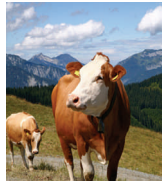
When: June 14th

Where: State Roundup in Lubbock, TX

Application Postmark Deadline: March 16th

For more information go to <http://texas4->

D1 4-H Beef Project Family Training Series



Session 1—April 21

Beef Project Selection and Tour
Kris Black Hereford Ranch, Crawford, OK
Chartered bus will depart from Amarillo at 8a.m.

Session 2—June 2

Beef project daily care, facility tour and showmanship instructions and contests
Wellington Fairgrounds
Bring your own personal steer or heifer

Session 3—October 29

Beef project fitting and showmanship
Moore County Community Building in Dumas. Bring your own personal steer or heifer

A one time cost (lunch provided) per 4-H youth participating is \$75 and \$50 for adults. For more information, contact J. D. at 468-5543, or 463-0245.

R. W. "Digger" Howard 4-H Livestock Barn Feeding Facility Pen Request Requirements

Many of you may still not be aware of our phenomenal feeding facility which is available to all Randall County 4-H Youth. The Digger Howard 4-H Barn is located on South Georgia directly behind the Randall County Jail. Two livestock feeding barns are equipped with 12-8x8 indoor pens with 16-foot runs and automatic stainless steel heated waterers. Additionally, each pen has its own feed room. All pens are designed for small animal projects (lambs, goats or swine.) To reserve your pen(s) it's simple, just come by the Extension office and complete the pen contract agreement form. A \$100 pen rent fee will be required with \$50 being reimbursed to you after we verify that your pen has been cleaned up. Remember its available for all Randall County 4-Hers.



Club News



T Anchor 4-H Club

When: 6 p.m. Officers meet Monday, Feb. 13th
6:30-8:30 p.m. (other members)

Where: Kuhlman Extension Center

Food: Fried Chicken supplied by club (Bring side dishes-enough to feed 8.)

Dessert: Committee please bring desserts

Community Service: Making valentines for Veterans

Program: "Character Counts: by Brandon Dukes

Recreation: TBA by Casey Rust

Leader: Sheri Artho, 353-0056 or 220-9557, or slartho@hotmail.com

PLEASE CHECK YOU EMAILS DAILY. THIS WILL BE OUR CLUB'S WAY OF SENDING INFORMATION AND UPDATES.

Livestock Project Club

When: 3 p.m. Sunday, February 12th

Where: Kuhlman Extension Center

Leader: Contact Larry Roots at 676-4099, 356-8729 or ljroots@suddenlink.net for information.

Palo Duro 4-H Club

NO FEBRUARY MEETING

NEXT MEETING WILL BE IN APRIL

Leaders: Laura & Bryan Smith,
655-5420, or bryanlaurasmith@aol.com

Sundown 4-H Club

NO FEBRUARY MEETING

NEXT MEETING WILL BE IN APRIL

Leaders: Gary & LeAnne Vogel at 655-7645 or gltjv9011gltjv@aol.com

South Amarillo 4-H Club

When: 6:30 p.m. Thursday, February 9th

Where: Digger Howard Livestock Building

Leader: Contact Norissa Aguirre, 206-1494, or fgaguir@aol.com for information.

Cowboy 4-H Club

Contact Tricia Odom, 764-3560, or

triciaodom@sbcglobal.net for information.



Project & Clover Kid News



Rifle Project

Leaders: Scott (351-2385) or Kathryn (382-6105)
Karcher or boergoatlady@gmail.com.

Shotgun Project

Leader: Greg Curry, 655-0561, or
gdcurry@amaonline.com

Photography

Leader: Cathy McCarty, 282-8176, or
jimorcathy@suddenlink.net

T-Anchor Pony Express Clover Kids

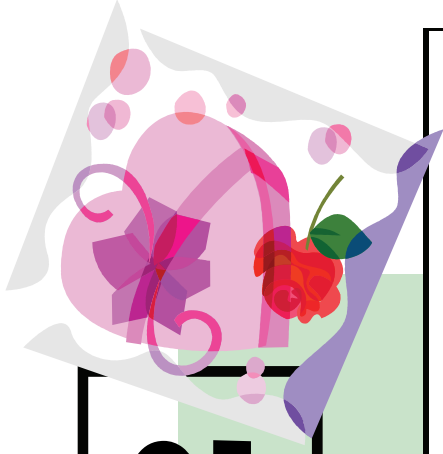
See T-Anchor club meeting plans.

Leader: Melisa Compos, 488-2326

Rabbit Project

Leaders: Lynne McCright, 282-3627, or
lynne@famcampserv.com & Kathryn Karcher,
382-6105

February 2012



Sun	Mon	Tue	Wed	Thu	Fri	Sat
			1	Consumer Decision Making 5:30 p.m.	3	4
5	Texas 4-H Opportunity Scholarships due to County Extension Office Clothing Workshop 6p.m. 4-6 p.m.	County Council Meeting 6:30 p.m. Horse Judging, 4:30 pm	8	Consumer Decision Making 5:30 p.m.	10	11
12	Clothing Workshop 4-6 p.m. Rifle Practice 6p.m.	Horse Judging, 4:30 pm HANNI'S VALENTINE'S DAY	TEEA Scholarship Applications due to County Extension Office 15	Consumer Decision Making 5:30 p.m.	17	18
19	-Holiday- County Offices Closed Rifle Practice 6p.m.	Horse Judging, 4:30 pm Deadline to email Newsletter informa- tion to Extension Of- fice	22	Consumer Decision Making 5:30 p.m.	24	25
26	Clothing Workshop 4-6 p.m.; Big 5 Meet- ing, 6:30 p.m.; Rifle Practice 6 p.m. Houston Stock Show Travel Meeting 630p.m.	Horse Judging, 4:30 pm	29			
		28				

Texas AgriLife Extension Service

Randall County 4-H

Herbert F & Jeannie Kuhlman Extension Center
200 N Brown Rd
Canyon, TX 79015

Return service requested

Phone: 806-468-5543
Fax: 806-468-5547
E-mail: randall-tx@tamu.edu

"To Make the Best Better"

Check us out on the web!

<http://randall.agrilife.org/>



FROM EXTENSION

Leesa Wood Calvi

Leesa Wood Calvi,
County Extension Agent-
Family & Consumer Science

Kim Peters

Kim Peters
County Extension Agent-
4-H Youth Development

J. D. Ragland

J.D. Ragland
County Extension Agent-
Agriculture

Educational programs of Texas AgriLife Extension Service are open to all people without regard to race, color, sex, disability, religion, age, or national origin.

The Texas A&M University System, U.S. Department of Agriculture, and the County Commissioners Courts of Texas Cooperating.

Information contained in this letter is for educational purposes only. Reference to commercial products or trade names is made with the understanding that no discrimination is intended and no endorsement by the Texas A&M AgriLife Extension Service of the Texas A&M University System is implied.